



2/30 Portland Crescent Maroubra NSW

2 🛏 1 🚿 2 🚗

The Lifestyle;

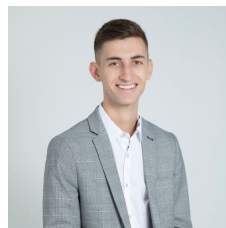
Situated in a boutique block of just five, this modern two-bedroom apartment offers an exceptional lifestyle opportunity, with Maroubra's beachside cafés, ocean parklands, and local shops just moments away. Featuring spacious living areas, an eat-in kitchen and spacious lock up garage, this property is ideal for young couples or young families.

Type : Apartment
Price : \$950 pw
Building Size : 88 sqm
Land Size : 88 sqm
View : <https://www.agentsandco.com.au/lease/nsw/eastern-suburbs/maroubra/residential/apartment/8160743>

Property Features Include;

- + Generous living area opening onto a sunlit balcony
- + Eat-in kitchen with electric cooking and ample storage
- + Two well-proportioned bedrooms, both with built-in wardrobes

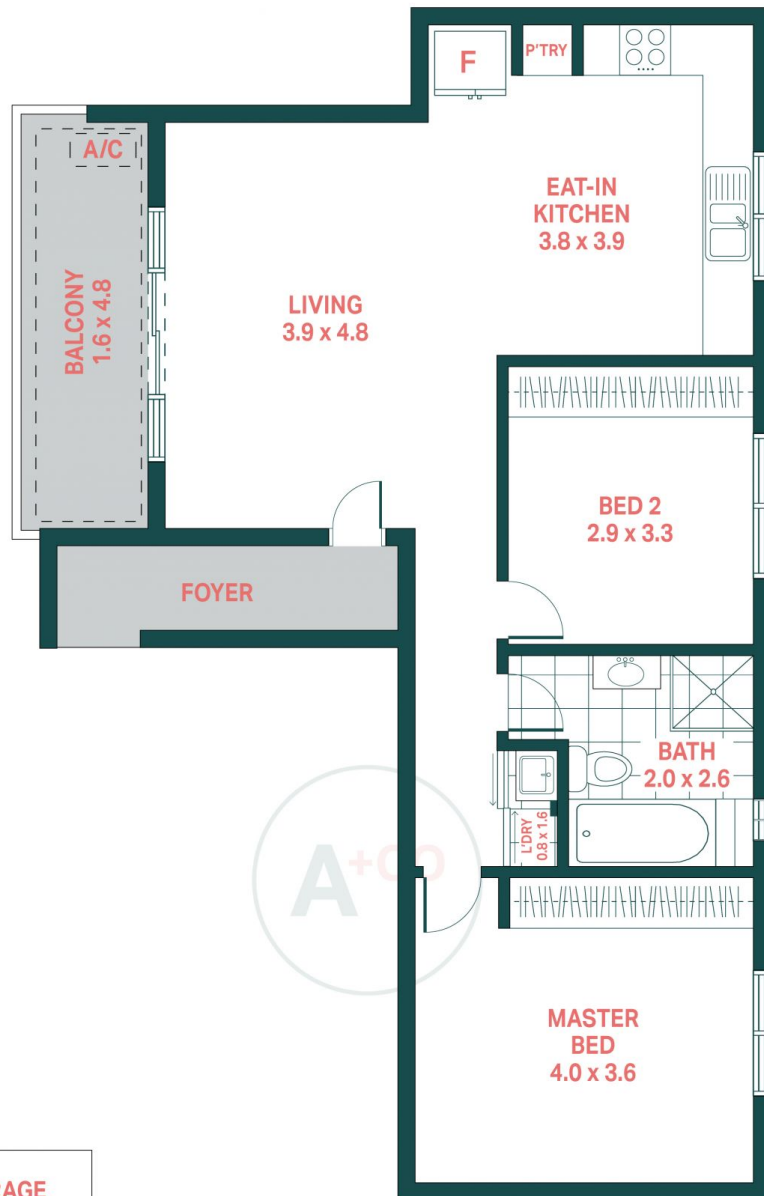
[For full version visit the website](https://www.agentsandco.com.au)



Anthony Schembri

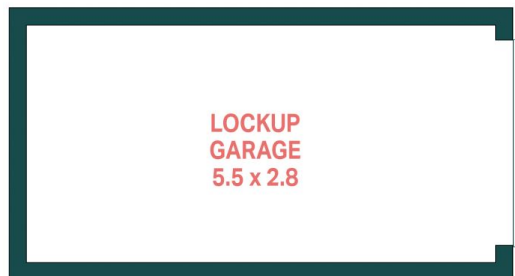


Eleni Roumanous



STORAGE

GROUND LEVEL



BASEMENT

2/30 Portland Crescent, Maroubra

Agents^{+CO}

Scale in metres.
Indicative only. All information contained herein is obtained from sources we believe to be accurate.
We cannot guarantee it's accuracy. Interested persons should make and on their own enquires.