



116/438-448 Anzac Parade Kingsford NSW

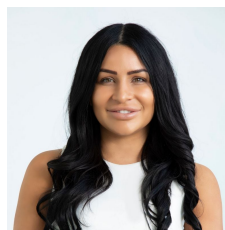
2 1 1

Situated in the sought-after "Cazzie" building, this contemporary two-bedroom split-level residence offers all the modern amenities one desires, coupled with the convenience of a prime location in the heart of Kingsford. With transportation, shops, cafes, UNSW, and a light rail stop right at your doorstep, this property promises an unparalleled urban lifestyle.

- + North-facing Courtyard and living area
- + Internal laundry and secure parking
- + Additional guest toilet downstairs
- + Kitchen equipped with gas cooking
- + Security building with elevator access
- + Internal size 95m² + 13m² carspace

[For full version visit the website](https://www.agentsandco.com.au)

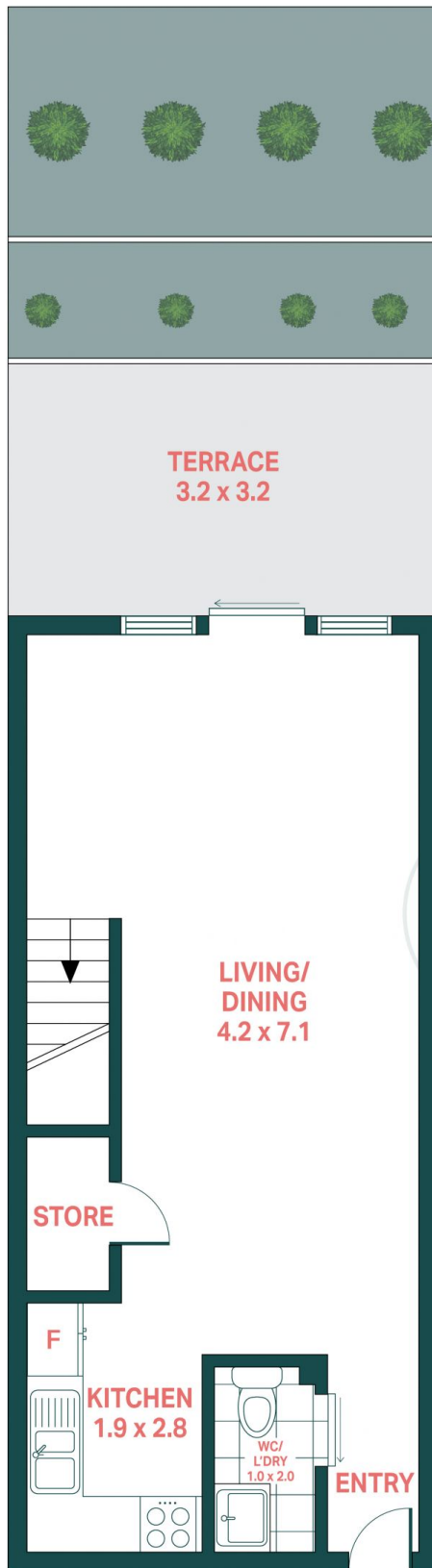
Type : Apartment
Price : For Sale \$825,000
Building Size : 108 sqm
View : <https://www.agentsandco.com.au/sale/nsw/eastern-suburbs/kingsford/residential/apartment/8099325>



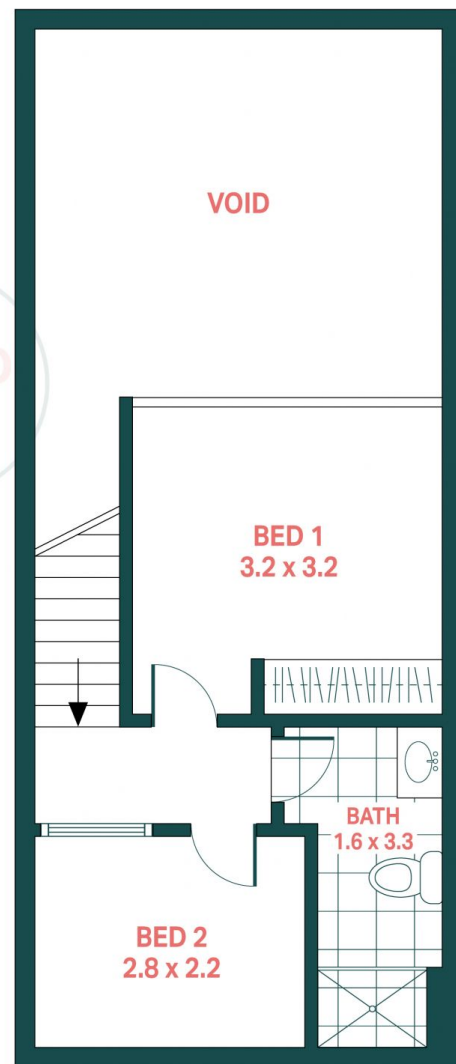
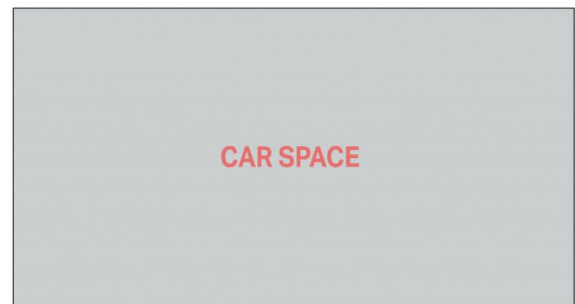
Natalie Vega
02 9314 2100



Nick Papas
02 9314 2100



ENTRY LEVEL



UPPER LEVEL

116/438 Anzac Parade, Kingsford

Agents^{+CO}

Scale in metres.
Indicative only. All information contained herein is obtained from sources we believe to be accurate.
We cannot guarantee it's accuracy. Interested persons should make and on their own enquires.