



G42/1 Finch Drive Eastgardens NSW

2 🛏 2 🚿 2 🚗

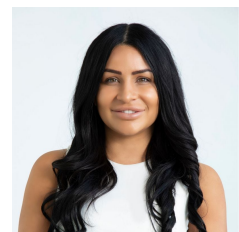
Boasting a sleek, modern interior design, this ground floor apartment offers a private sanctuary with a touch of elegance. Situated in a high-profile urban village, this stunning property combines comfort and functionality seamlessly. With a spacious 153sqm layout, this contemporary ground floor apartment includes high-end finishes, large and bright rooms, ample storage areas, separate study room and expansive open-plan living/dining spaces that flow out to a private courtyard. Enjoy a lifestyle of easy convenience in a high-growth eastern suburbs location within easy reach of Maroubra and Coogee Beaches and footsteps to world-class shopping and dining with excellent transport links to the airport and city.

Type : Apartment
Price : For Sale \$980,000 - \$1,050,000
Building Size : 153 sqm
View : <https://www.agentsandco.com.au/sale/nsw/eastern-suburbs/eastgardens/residential/apartment/8041738>

[For full version visit the website](https://www.agentsandco.com.au)



Clay Chigwidden
02 9314 2100



Natalie Vega
02 9314 2100



FLOOR PLAN

G42/1 Finch Drive, Eastgardens

Agents^{+CO}

Scale in metres.
Indicative only. All information contained herein is obtained from sources we believe to be accurate.
We cannot guarantee its accuracy. Interested persons should make and on their own enquires.