



22/4 Galaup Street Little Bay NSW

2 2 1

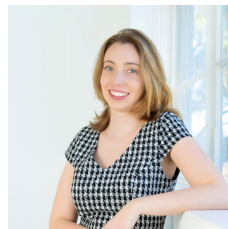
Situated in the Illume development created by the prestigious MAKO architectural firm, you will find yourself amidst rainforest landscaping within well maintained contemporary common areas. The apartment is a short walk to Little Bay Beach, trendy alfresco cafes, restaurants, boutique shops and grocery stores.

Offering an open plan layout surrounded by a broad wraparound terrace space, you will fall in love this apartment's light bright interiors and its quality fixtures and fittings.

- + Open plan living & dining opening onto wraparound tiled terrace, garden beds
- + Gas kitchen with European appliances, wood cabinetry and island bench

Land Size : 181 sqm

View : <https://www.agentsandco.com.au/lease/nsw/eastern-suburbs/little-bay/residential/apartment/8035453>



Katherine McMorrow
02 9314 2100



Eleni Roumanous
02 9314 2100

