



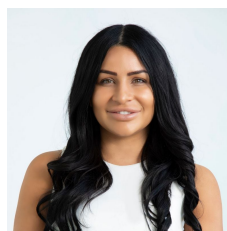
617 Anzac Parade Maroubra NSW

3 2 1

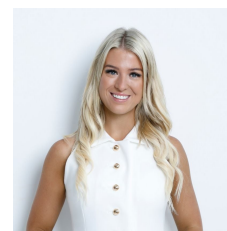
Set on a generous block of land, this timeless semi-detached home retains its authentic charm while offering an enormous opportunity to create and construct your dream home. With significant potential to add value through renovations or extensions (STCA), this home is ideal for a young family looking to settle in a premier locale. Move in immediately and take your time planning the perfect enhancements. Enjoy a lifestyle of convenience, located moments from Snape Park, Latham Park, David Phillips Sporting Ground, Coogee and Maroubra Beaches, express city transport, and some of Sydney's best schools, including Lycée Condorcet, the International French School of Sydney. Mount Sinai College. Close to Eastgardens and Pacific Square shopping precincts.

[For full version visit the website](https://www.agentsandco.com.au)

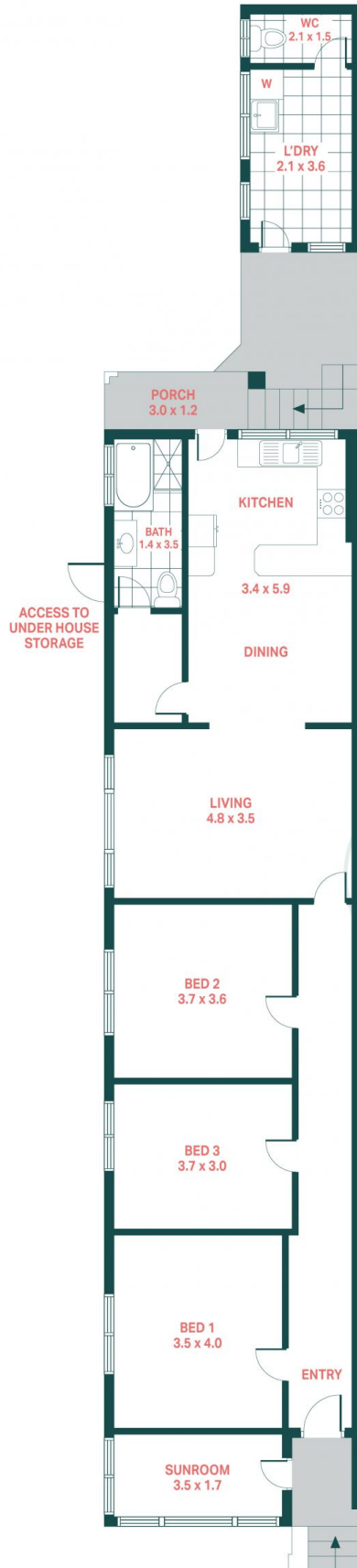
Type : Semi Detached
Land Size : 272 sqm
View : <https://www.agentsandco.com.au/sale/nsw/eastern-suburbs/maroubra/residential/semi-detached/8021687>



Natalie Vega
02 9314 2100



Maddison Christie
02 9314 2100



GROUND FLOOR



SITE PLAN

INT: 119m²
EXT: 155m²
LAND SIZE: 274m²

Agents^{+CO}

617 Anzac Parade, Maroubra

Scale in metres.
Indicative only. All information contained herein is obtained from sources we believe to be accurate.
We cannot guarantee it's accuracy. Interested persons should make and on their own enquires.