



228 Boyce Road Maroubra NSW

3 2 2

The Lifestyle;

Located conveniently only a short stroll to Pacific Square Maroubra Junction, this home is perfect for the growing family! This large, three bedroom home has been freshly repainted and finished with brand new laminate floorboards.

Type : House

Land Size : 361 sqm

View : <https://www.agentsandco.com.au/lease/nsw/eastern-suburbs/maroubra/residential/house/7573686>

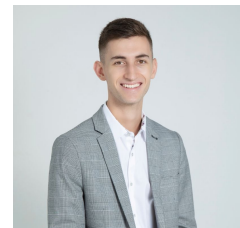
Property Features Include;

- + New floorboards and freshly repainted throughout
- + Direct north-facing yard with storage shed & clothes line
- + High ornate ceilings, stained glass windows
- + Original kitchen with electric appliances & sky light
- + Internal laundry
- + Three generous sized bedrooms plus sunroom off third

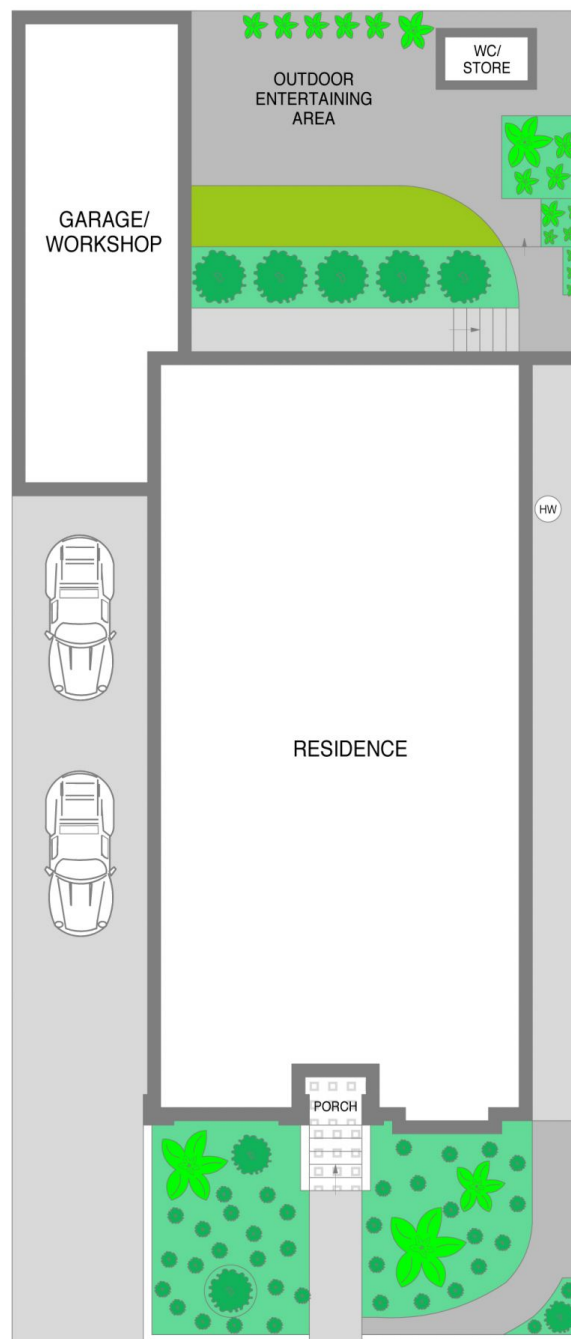
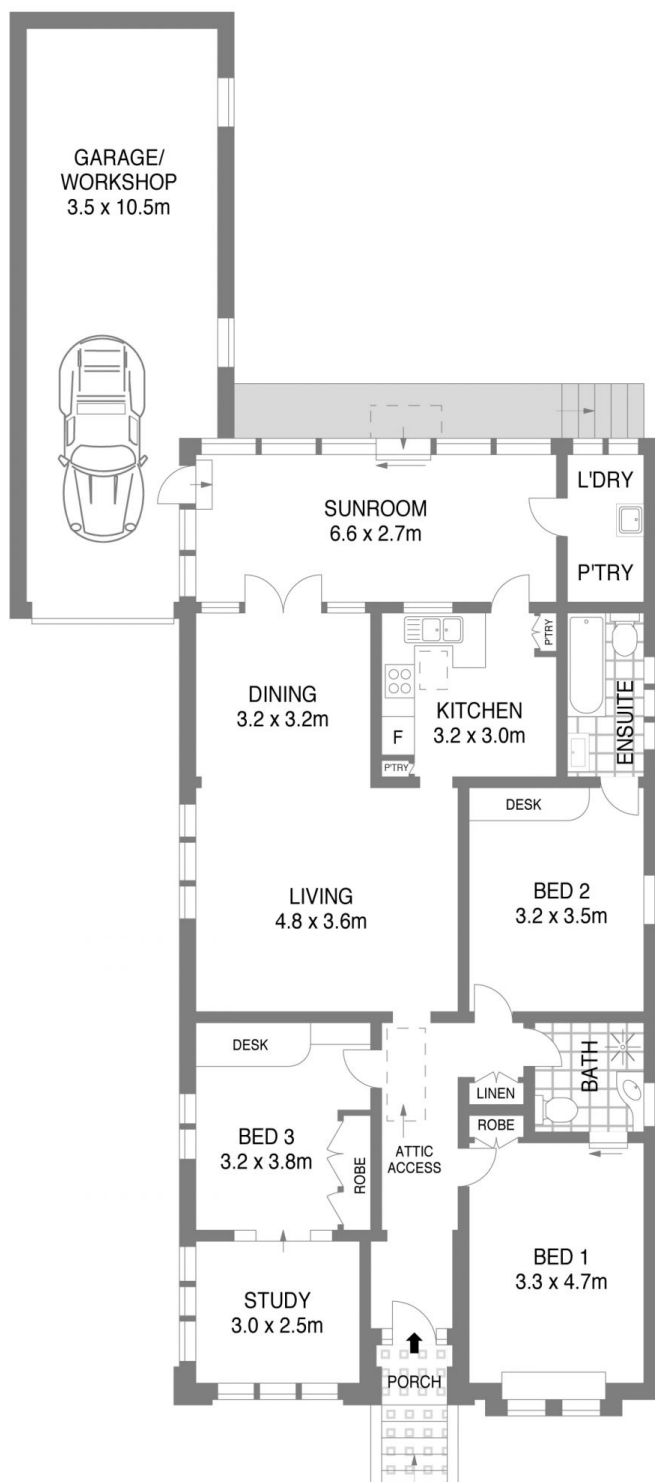
[For full version visit the website](https://www.agentsandco.com.au)



Eleni Roumanous
02 9314 2100



Anthony Schembri
02 9314 2100



SITE PLAN

228 Boyce Road

Maroubra

Scale in metres.
Indicative only. all information contained herein is obtained from sources we believe to be accurate.
We cannot guarantee it's accuracy. Interested persons should make their own enquiries.