

## 60A Pemberton Street Botany NSW

3 3 2

Located in one of Sydney's fastest growing urban village hotspots lies this uniquely crafted three bedroom terrace with a tranquil leafy outlook. Set over three levels, this home features stylish and intelligent design, enhancing natural light and providing fantastic liveability. A stunning family location which is in close proximity to shops, village cafes, public transport, schools, universities, beaches and Sydney CBD.

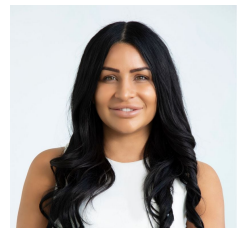
- + North East facing sunlit courtyard
- + Free-flowing living and dining space
- + Ducted air-conditioning, internal laundry
- + Stylish quality finishes, security intercom & private street-facing access

[For full version visit the website](https://www.agentsandco.com.au)

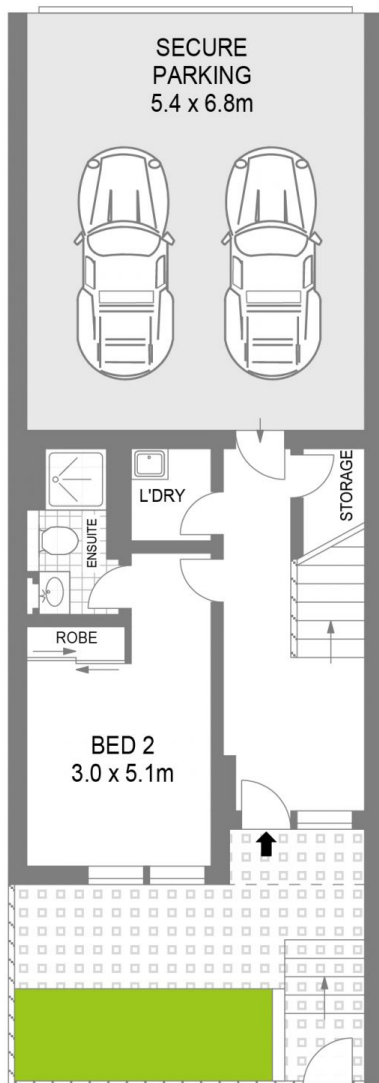
**Type** : Townhouse  
**Land Size** : 231 sqm  
**View** : <https://www.agentsandco.com.au/sale/nsw/eastern-suburbs/botany/residential/townhouse/7516666>



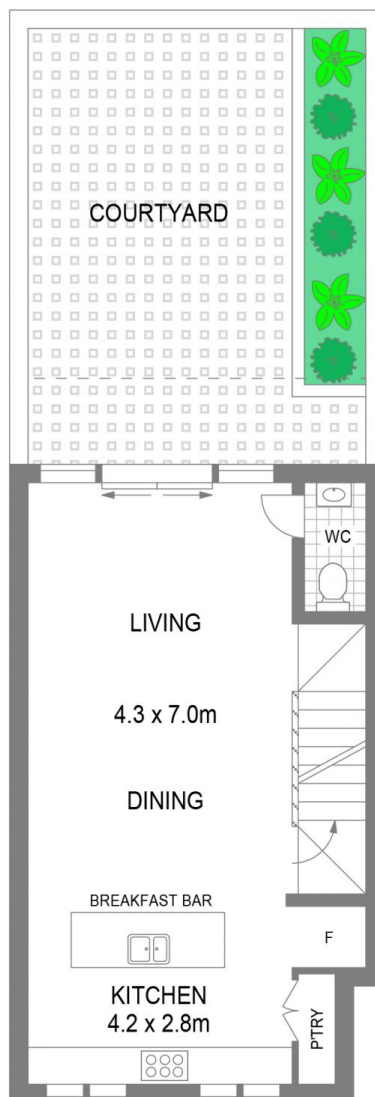
**Nick Papas**  
02 9314 2100



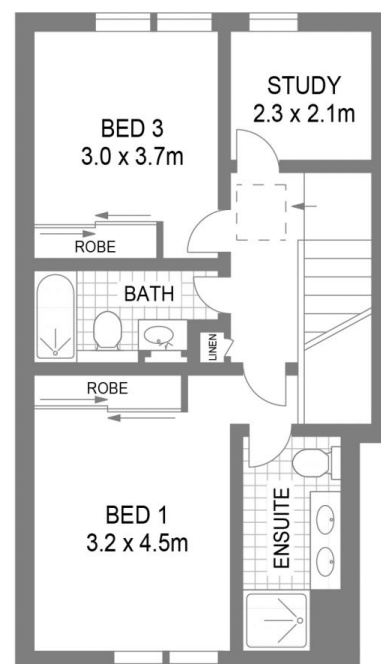
**Natalie Vega**  
02 9314 2100



ENTRY LEVEL



LEVEL ONE



LEVEL TWO

60A Pemberton Street

Botany

Scale in metres.  
Indicative only, all information contained herein is obtained from sources we believe to be accurate.  
We cannot guarantee it's accuracy. Interested persons should make their own enquiries.