

## G1/10-12 Green Street Maroubra NSW

1 1 1

Stylishly built with contemporary layout, this rare and modern apartment is conveniently located in the heart of Maroubra Junction. This industrial and ultra modern apartment has been designed with functionality and convenience in mind. Offering lifestyle value, this apartment is only a short distance from Pacific Square shopping center, Maroubra Beach, public transport, cafes, restaurants and all amenities.

- + 76sqm Internally with a potential rental return of \$600 - \$650pw
- + Stunning open plan living, kitchen and dining area with stylish, polished concrete flooring
- + Modern bathroom, Internal laundry that has been

[For full version visit the website](https://www.agentsandco.com.au)

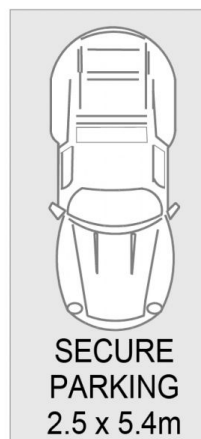
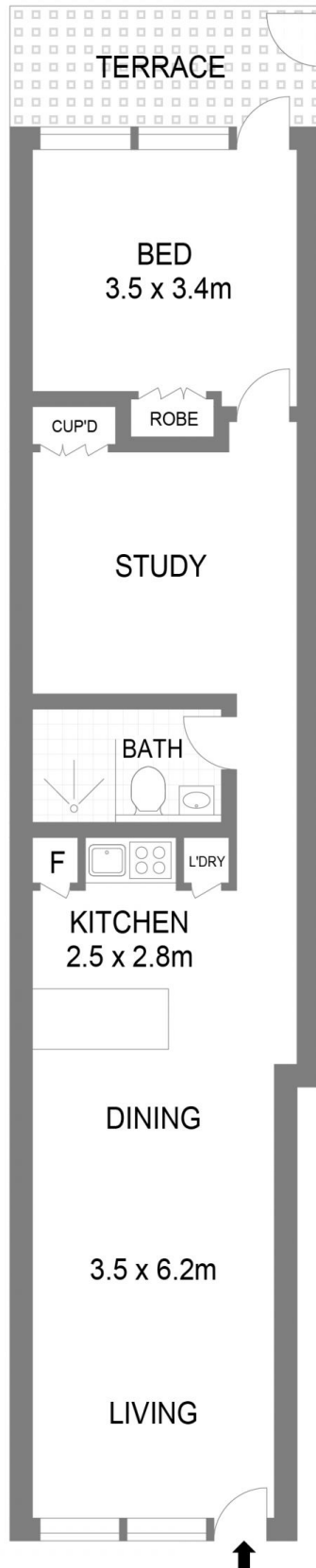
**Type** : Apartment  
**Land Size** : 90 sqm  
**View** : <https://www.agentsandco.com.au/sale/nsw/eastern-suburbs/maroubra/residential/apartment/7345949>



**Nick Papas**  
02 9314 2100



**Maddison Christie**  
02 9314 2100



G1/10-12 Green Street

Maroubra

Scale in metres.  
Indicative only. All information contained herein is obtained from sources we believe to be accurate.  
We cannot guarantee it's accuracy. Interested persons should make and on their own enquiries.