



14 Rigney Avenue Kingsford NSW

4 2 2

Modern finishes coincide with touches of character charm to create this deceptively spacious, perfect family entertainer, epitomising all that is, comfort, style and convenience. Positioned in a quiet tree lined street bordering on Randwick, you're welcomed with this picturesque front façade, framed by lush green hedges and a private manicured garden offering the ideal family environment. With an extremely charming front entry, original architecture complimented by soaring high ornate ceilings, the floorplan caters for flexible living with the lower level consisting of two double bedrooms, formal living space complete with Bay window, recently updated full bathroom, European laundry flowing onto open plan kitchen and dining room overlooking the sundrenched

Type : Semi Detached

Price : \$ 2,631,000

View : <https://www.agentsandco.com.au/sale/nsw/eastern-suburbs/kingsford/residential/semi-detached/7230037>

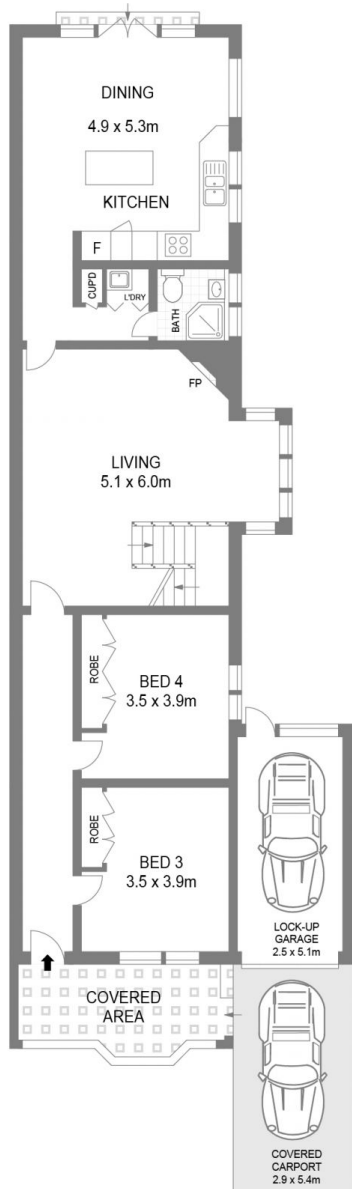


Clay Chigwidden
02 9314 2100

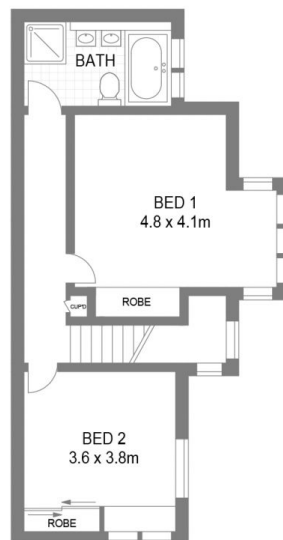


Nick Papas
02 9314 2100

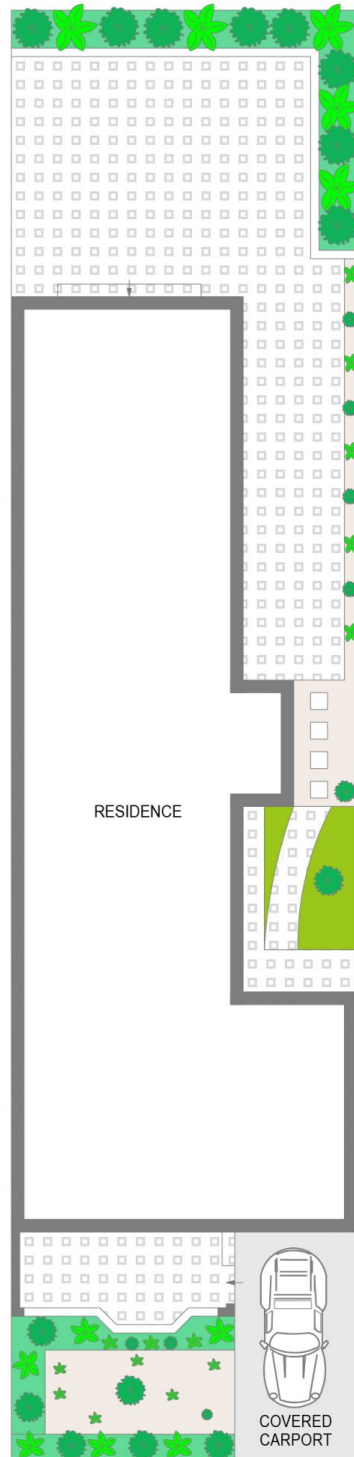
[For full version visit the website](https://www.agentsandco.com.au)



GROUND LEVEL



LEVEL ONE



SITE PLAN

14 Rigney Avenue

Kingsford

Scale in metres.
Indicative only. All information contained herein is obtained from sources we believe to be accurate.
We cannot guarantee its accuracy. Interested persons should make and on their own enquiries.