



14 Caley Street Chifley NSW

4 2 2

Flooded with natural light and a true sense of space, the floorplan caters perfectly for the family who loves to entertain. Bi-fold doors seamlessly open onto a custom built, wrap around alfresco area overlooking landscaped backyard and inground pool. Perched up high, capturing wide open district views out towards Botany Bay from the upper level, stylish streamlined interiors are wrapped in glass for optimal natural light and airflow. This residence was cleverly designed for the active family wanting comfortable living, compromising of multiple living spaces, alfresco entertaining and four bedrooms, with the main featuring a sleek ensuite and walk-in robe. Lifestyle is key, being only moments to some of Sydney's best hidden beaches including, Malabar, Little Bay and La Perouse, numerous coastal walks, Parklands including Chifley sporting reserve with new children's playground and flying

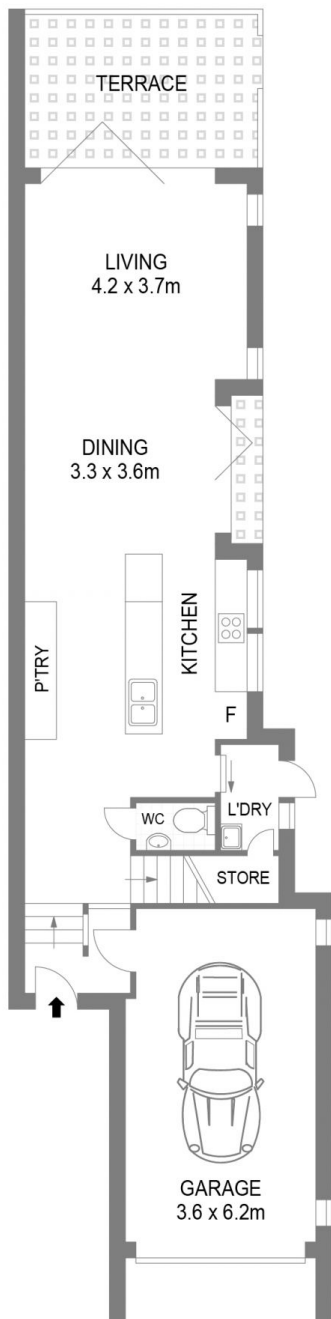
View : <https://www.agentsandco.com.au/sale/nsw/easter-n-suburbs/chifley/residential/house/7172909>



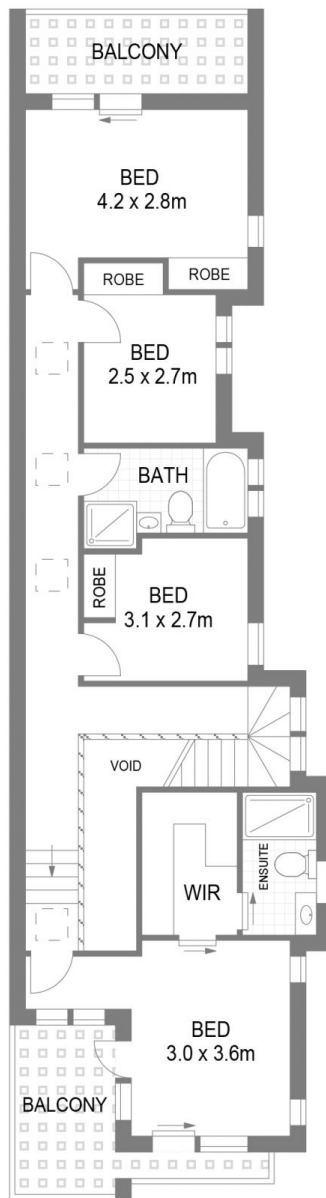
Clay Chigwidden
02 9314 2100



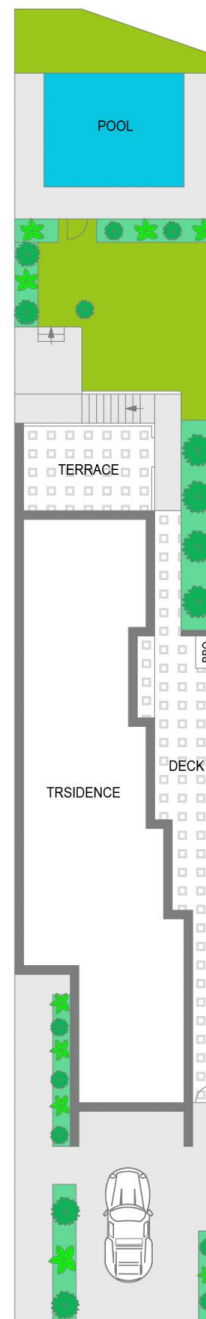
Maddison Christie
02 9314 2100



GROUND FLOOR



FIRST FLOOR



SITE PLAN

14 Caley Street

Chifley

Scale in metres.
 Indicative only. All information contained herein is obtained from sources we believe to be accurate.
 We cannot guarantee it's accuracy. Interested persons should make and on their own enquiries.