



## 6 Cleveland Avenue Surry Hills NSW

3 1

### The Lifestyle:

Spacious three bedroom terrace in great location. This terrace spans over three levels with good-sized bedrooms, main bedroom with balcony, eat-in kitchen, neat bathroom with laundry and large courtyard. Only moments Moore Park Stadiums, Entertainment Quatre and Central Station

### Property Features Include:

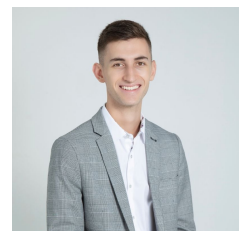
- Freshly painted throughout
- Spacious living and dining room
- Main bedroom with balcony
- Good sized bedrooms
- Eat-in Kitchen
- Sun drenched court yard at rear

[For full version visit the website](https://www.agentsandco.com.au/lease/nsw/eastern-suburbs/surry-hills/residential/terrace/7130194)

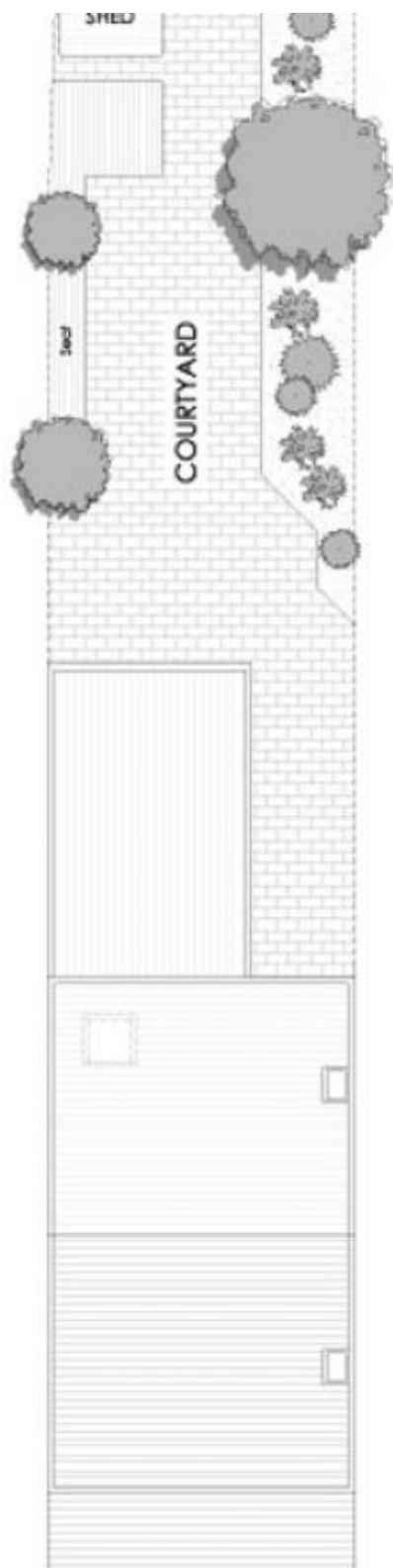
**Type** : Terrace  
**Land Size** : 172 sqm  
**View** : <https://www.agentsandco.com.au/lease/nsw/eastern-suburbs/surry-hills/residential/terrace/7130194>



**Eleni Roumanous**  
02 9314 2100



**Anthony Schembri**  
02 9314 2100



CLEVELAND AVENUE



PLANS SHOWN ARE ONLY INDICATIVE OF LAYOUT. DIMENSIONS ARE APPROXIMATE

All information contained herein is gathered from sources we believe to be reliable, however we cannot guarantee its accuracy and interested persons should rely on their own enquiries. Dimensions are approximate.

Approximate Areas:	
Internal Floorspace:	100m <sup>2</sup>
Balconies, Courtyards, Gardens & Store:	72m <sup>2</sup>
Total:	172m <sup>2</sup>



## 6 CLEVELAND AVENUE

Council Rates: \$985 pa

Water Rates: \$690 pa

## SURRY HILLS

Land Dimensions: 4.68/4.50 X 23.67/ 23.62m