



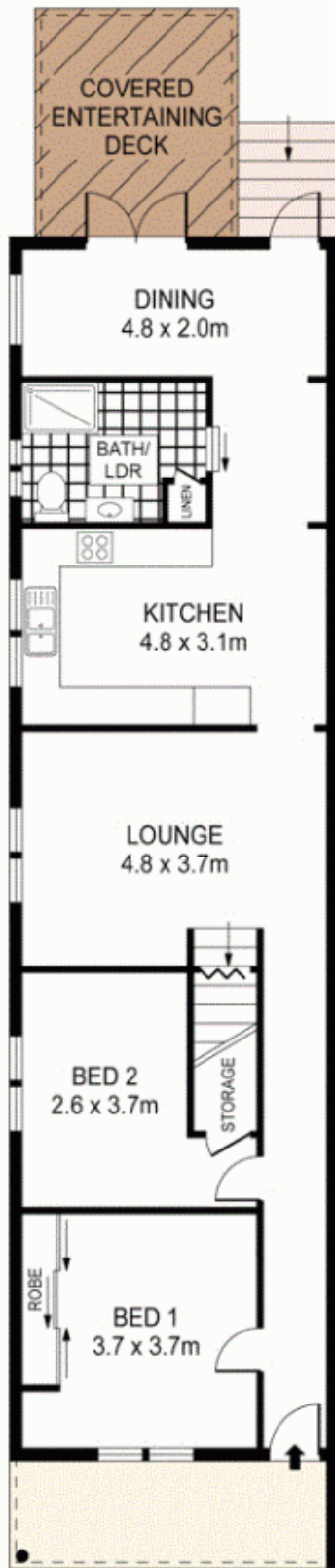
## 1188 Botany Road BOTANY NSW

3 1

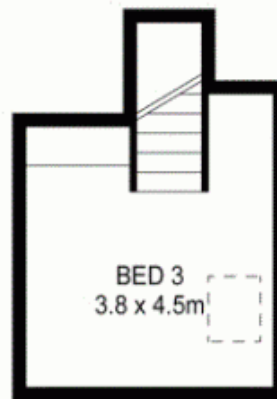
Immaculately presented with an abundance of natural light throughout, this well renovated semi detached home is a sophisticated family retreat ingeniously blending indoor/outdoor living, maximising the home's entertaining appeal.

- Light filled inviting open plan living arrangement
- Large quality caesar kitchen with stainless steel appliances
- Three good sized bedrooms two with built-in wardrobes
- Ideal alfresco outdoor dining area with timber deck
- Ample under house storage area, Brand new bathroom
- Sun-drenched private low maintenance backyard
- Just moments from the Historic Sir Joseph Banks Park
- Moments from schools, shops, beaches, transport and CBD

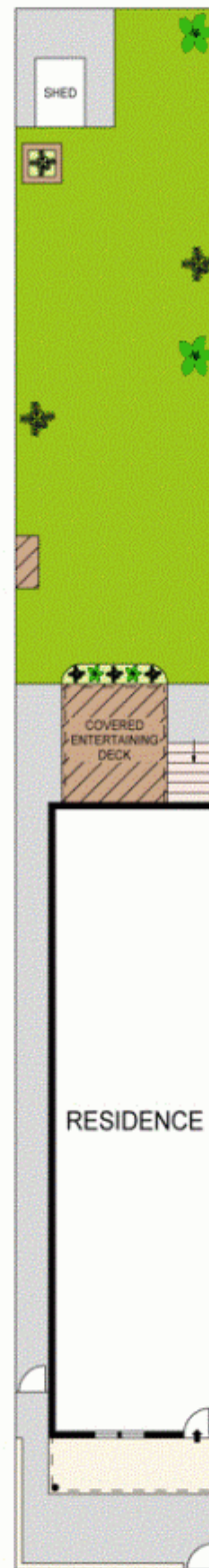
**Land Size** : 290.8 sqm  
**View** : <https://www.agentsandco.com.au/sale/nsw/eastern-suburbs/botany/residential/semi-detached/6767835>



**ENTRY LEVEL**



**UPPER LEVEL**



**SITE PLAN**  
(NOT TO SCALE)



PLANS SHOWN ONLY INDICATIVE OF LAYOUT. DIMENSIONS ARE APPROXIMATE.  
Ref. No: 46131

