



1003/98-102 Maroubra Road MAROUBRA NSW

2 2 1

Located in the heart of Maroubra Junction in the stunning "Belair Building" this over-sized apartment is all about the views and convenience. It offers a very large sun-drenched terrace with the city skyline views & district views. Not only is this a wonderful opportunity to embrace a truly low maintenance lifestyle there is also room for you to add your own touch and contemporary flair.

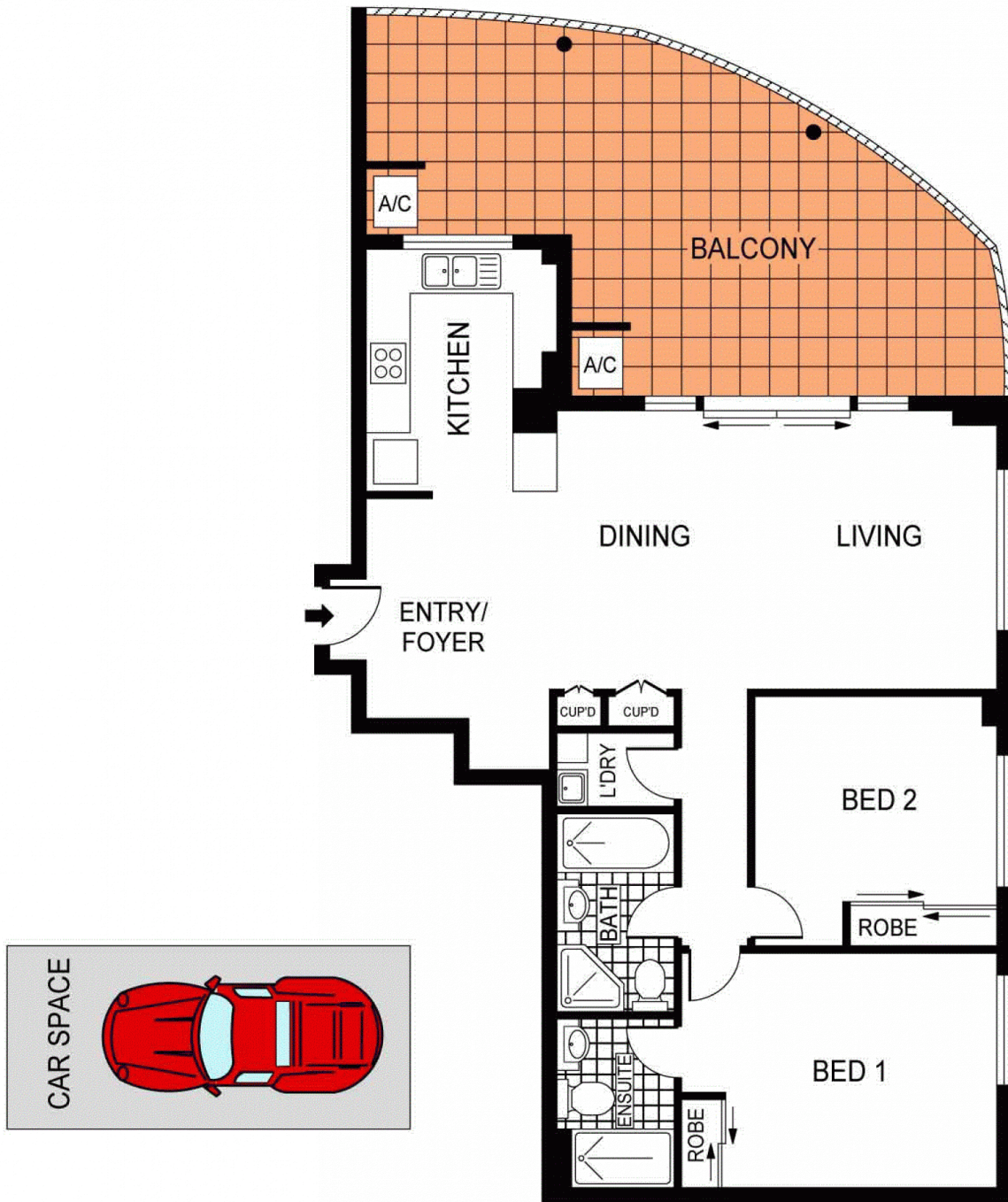
- Top floor Penthouse with city views
- Large living and dining areas
- Open plan kitchen with gas appliances & stone bench-tops
- Main bedroom with en-suite
- Security parking with internal lift access

[For full version visit the website](https://www.agentsandco.com.au)

Type : Apartment
Building Size : 14 sqm
View : <https://www.agentsandco.com.au/sale/nsw/eastern-suburbs/maroubra/residential/apartment/6767819>



Nick Papas
02 9314 2100



PLANS SHOWN ONLY INDICATIVE OF LAYOUT. DIMENSIONS ARE APPROXIMATE.
Ref. No. 43998



1003/98-102 MAROUBRA ROAD

MAROUBRA