



17 Brisbane Street CHIFLEY NSW

3 1 2

Offered for the first time in 67 years, this freestanding weatherboard home positioned on level 624sqm block of land represents an exciting opportunity for both the home owner and developer alike. Sitting proudly in an elevated position and boasting a wide north facing frontage, the potential here is only limited by your imagination. Your dream home could be closer than you think!

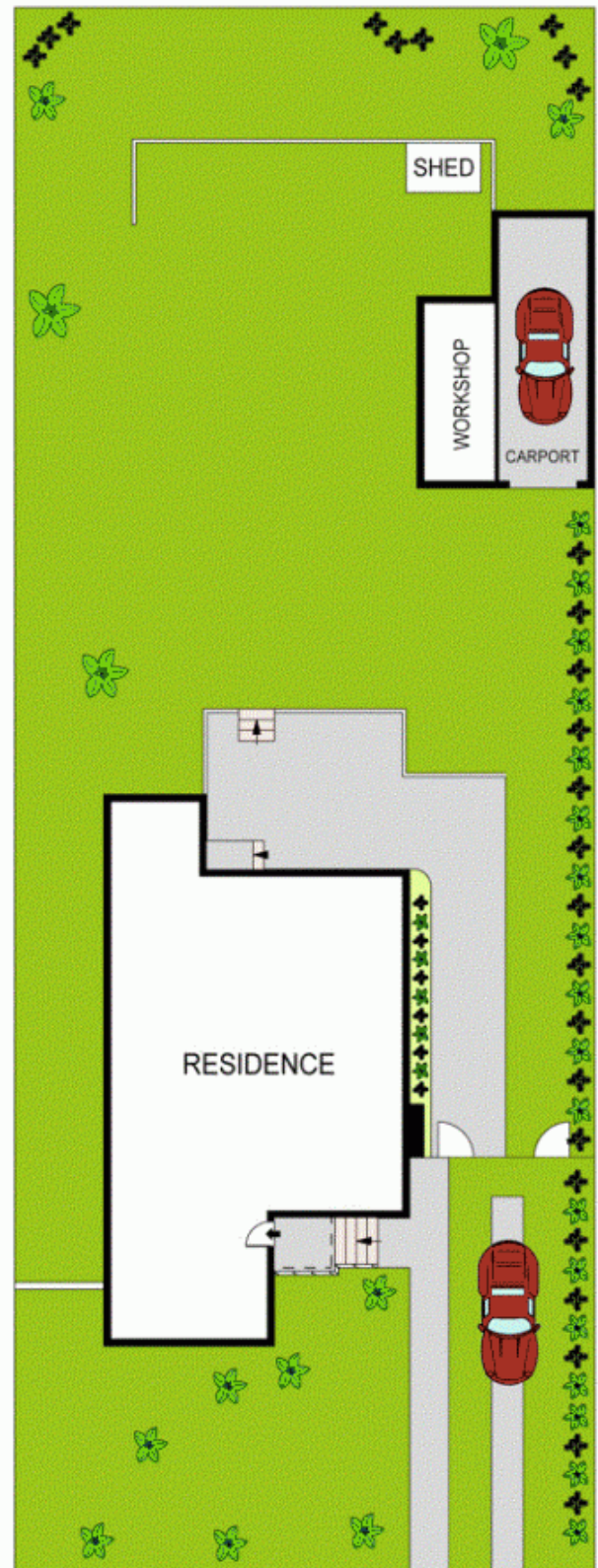
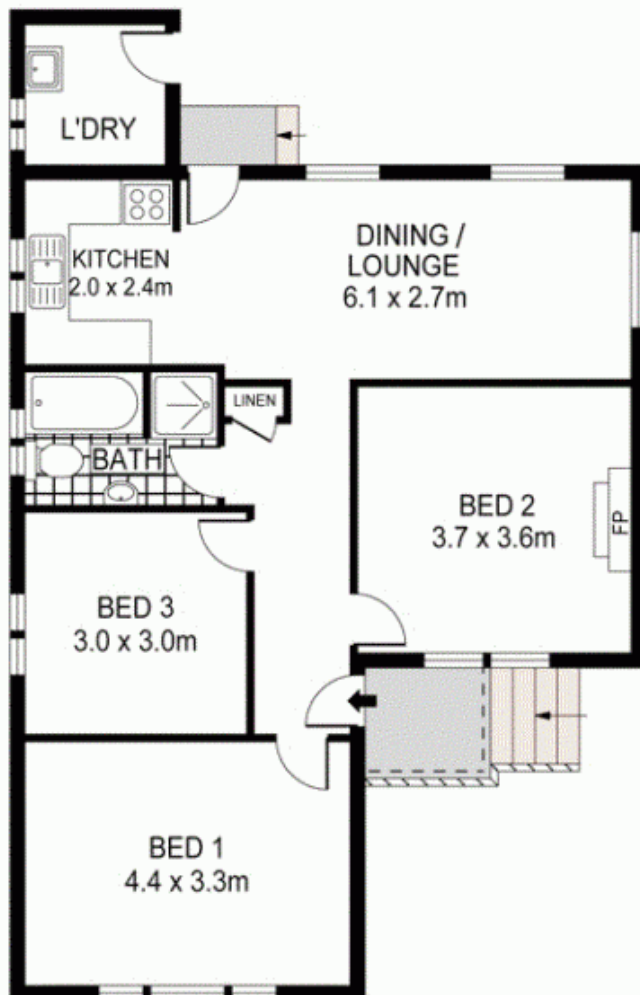
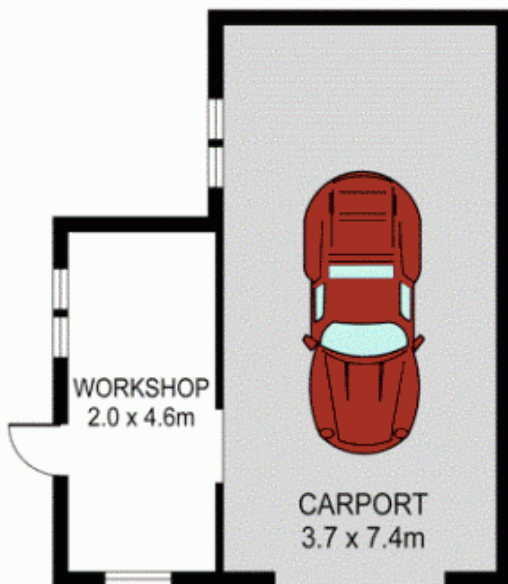
- * Freestanding weatherboard home on elevated 624sqm block
- * Three good sized bedrooms & one bathroom
- * Neatly maintained original kitchen, bathroom & laundry
- * Large, elevated, sun-filled rear yard with established trees
- * Long side driveway with plenty of off-street parking

[For full version visit the website](https://www.agentsandco.com.au/sale/nsw/eastern-suburbs/chifley/residential/house/6767812)

Type : House
Land Size : 624 sqm
View : <https://www.agentsandco.com.au/sale/nsw/eastern-suburbs/chifley/residential/house/6767812>



Nick Papas
 02 9314 2100



SITE PLAN
(NOT TO SCALE)

0 1 2 3 4 5 SCALE (METRES)

PLANS SHOWN ONLY INDICATIVE OF LAYOUT. DIMENSIONS ARE APPROXIMATE.
Ref. No. 42454

17 BRISBANE STREET