



## 20 Hastings Street BOTANY NSW

3 1 2

Boasting scope for modern updates and with plenty of space for growing families, this impressive single level home is an excellent opportunity for those seeking a quality residence in an established neighbourhood. Ideally located, it's a short stroll from Botany's vibrant hub, shops, caf?s, restaurants and city buses.

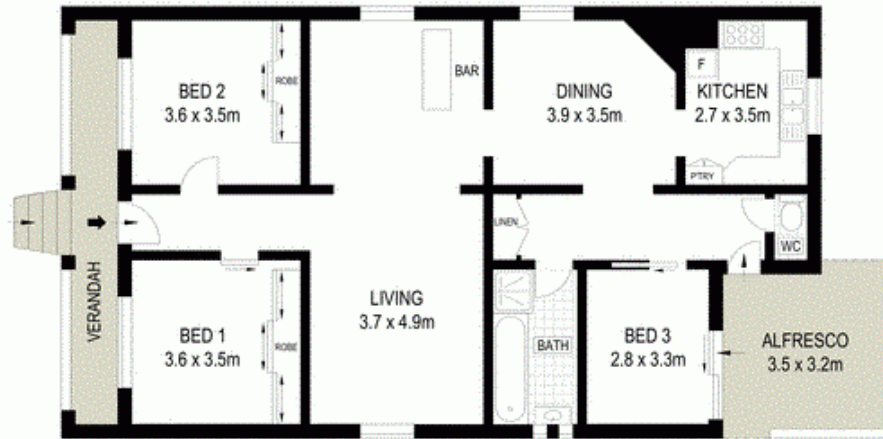
- \* Spacious lounge area with a bar with separate dining room
- \* Covered entertaining patio overlooking in-ground heated pool
- \* Classic kitchen with gas cooking and ample cupboard space
- \* Two well scaled bedrooms plus sun/study with builtins

**Type** : House  
**Land Size** : 419 sqm  
**View** : <https://www.agentsandco.com.au/sale/nsw/eastern-suburbs/botany/residential/house/6767811>

[For full version visit the website](https://www.agentsandco.com.au)



SITE PLAN (NOT TO SCALE)



0 1 2 3 4 5

Scale in metres. Indicative only. Dimensions are approximate. All information contained herein is gathered from sources we believe to be reliable. However we cannot guarantee its accuracy and interested persons should rely on their own enquiries.

20 Hastings Street, Botany

