



127 Eastern Avenue KINGSFORD NSW

4 2 1

About the Home;

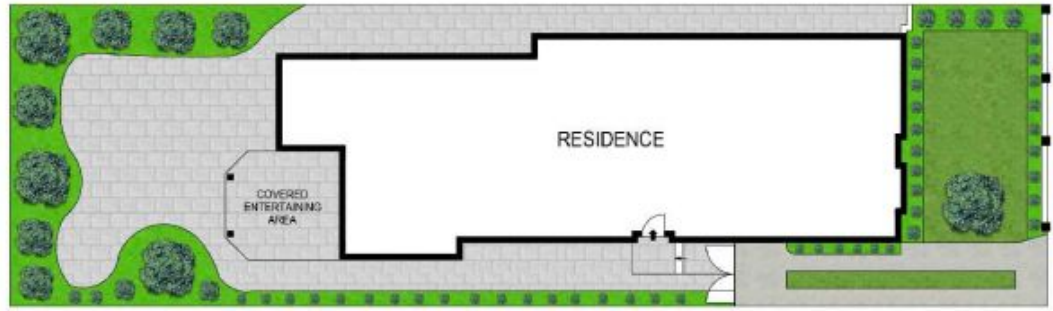
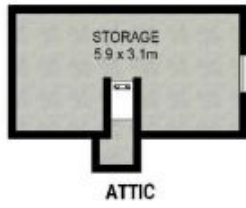
- * Character filled residence, high ornate ceilings, stained glass windows
- * Large open plan kitchen and dining area flows out to a covered entertaining area
- * Four good sized bedrooms with additional sunroom
- * Master Bedroom with additional office/ walk in wardrobe & en-suite
- * Gas kitchen w/ double sink, dishwasher and double ovens
- * Entertainers paved yard with covered terrace
- * Situated on 374sqm (approx.) land size with a North East aspect rear yard
- * Moments to Kensington Park, The Australian Golf Club,

[For full version visit the website](https://www.agentsandco.com.au/sale/nsw/eastern-suburbs/kingsford/residential/house/6767708)

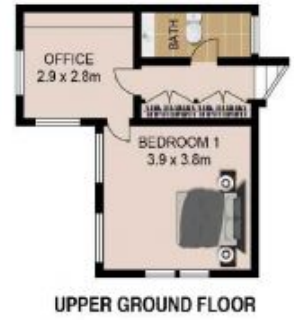
Type : House
Land Size : 374 sqm
View : <https://www.agentsandco.com.au/sale/nsw/eastern-suburbs/kingsford/residential/house/6767708>



Nick Papas
02 9314 2100



SITE PLAN
(NOT TO SCALE)



SCALE (METRES)

All information contained herein is gathered from sources we deem to be reliable.
However we cannot guarantee its accuracy and interested parties should rely on their own enquiries.
Ref. No: 66558

127 EASTERN AVENUE



KINGSFORD