



## 16 Murray Road PAGEWOOD NSW

3 2 2

### About The Home;

- Three generous bedrooms, all with built-ins, main with ensuite
- Separate study nook room with built-in desk
- Large entertaining area with timber decking
- Beautiful North facing backyard
- Huge useable attic space
- Kitchen fit with marble breakfast bar, luxury stainless steel appliances
- Ducted Air conditioning throughout
- Nestled within a leafy cul-de-sac only moments away from Jellicoe Park

### The Lifestyle;

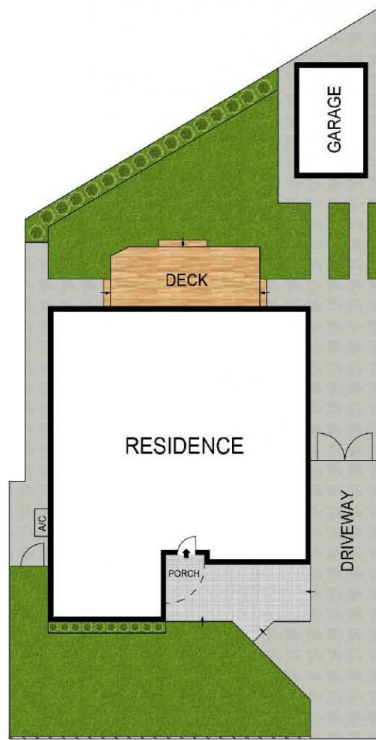
Quickly becoming an in-demand suburb with families,

**Land Size** : 405 sqm

**View** : <https://www.agentsandco.com.au/sale/nsw/eastern-suburbs/pagewood/residential/house/6767663>



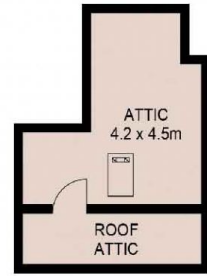
**Nick Papas**  
02 9314 2100



**SITE PLAN**  
(NOT TO SCALE)

0 1 2 3 4 5  
SCALE (METRES)

PLANS SHOWN ONLY INDICATIVE OF LAYOUT. DIMENSIONS ARE APPROXIMATE.  
Ref. No: 64620



**ATTIC**



16 MURRAY ROAD

PAGEWOOD