



26 Monash Gardens PAGEWOOD NSW

3  2  2 

Architecturally enhanced to showcase a prime selection of finishes, this impeccable home excels in luxurious living that combines space, style and quality across a light filled layout. Situated in Pagewood's most prestige pocket, surrounded by parklands, golfing greens and placed minutes away to Westfield Eastgardens.

Price : \$ 2,150,000

Land Size : 373 sqm

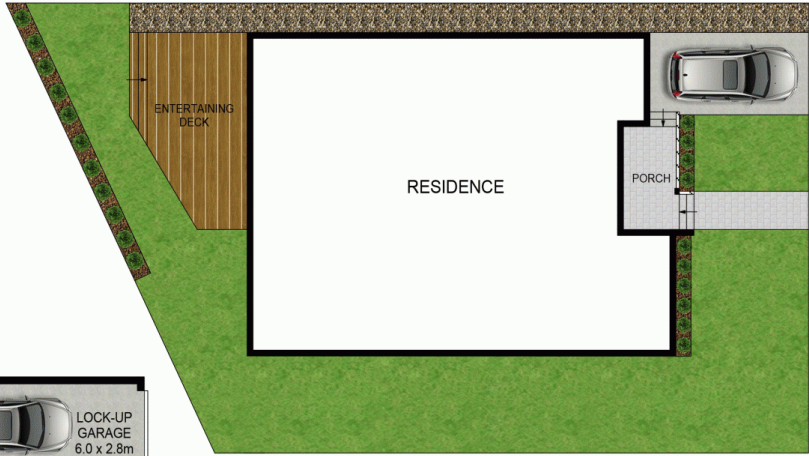
View : <https://www.agentsandco.com.au/sale/nsw/eastern-suburbs/pagewood/residential/house/6767605>

Features:

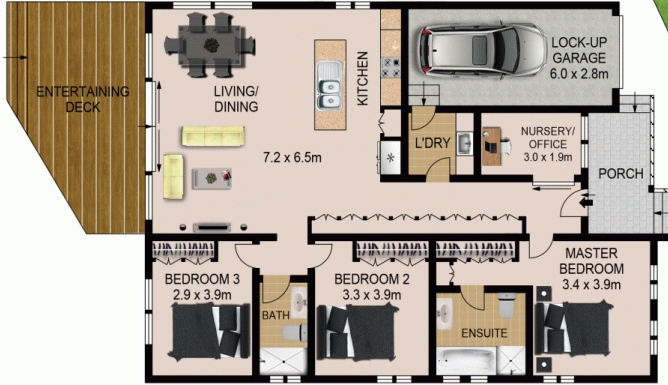
- Entertainers' kitchen with Bosch appliances, marble benchtops
- Living and dining boasting high ceilings opening to a large deck
- 3 large bedrooms all with built-in robes 4th bedroom nursery/office
- Spacious bathrooms, ensuite with modern floor to ceiling tiles



Nick Papas
02 9314 2100



SITE PLAN
(NOT TO SCALE)



0 1 2 3 4 5
SCALE (METRES)

All information contained herein is gathered from sources we deem to be reliable.
However we cannot guarantee its accuracy and interested parties should rely on their own enquiries.
Ref. No: 77519



26 MONASH GARDENS

PAGEWOOD