



1 Gainford Avenue MATRAVILLE NSW

4 3 4

Displaying a wonderfully generous design with effortless indoor/outdoor flow, this stylish modern residence offers superb versatility for relaxed family living. Situated in a quiet pocket, the home is set within a short walk to local shops, schools and express transport to Sydney CBD.

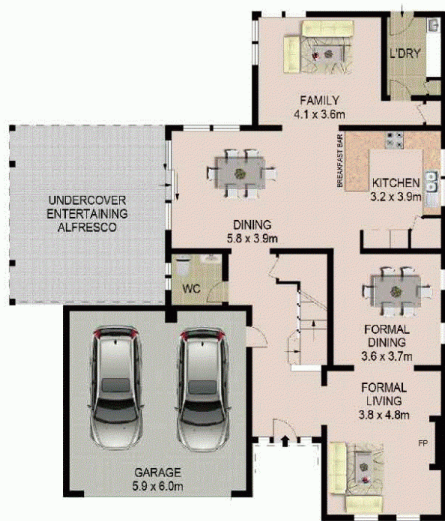
Land Size : 531 sqm
View : <https://www.agentsandco.com.au/sale/nsw/eastern-suburbs/matraville/residential/house/6767575>

Features:

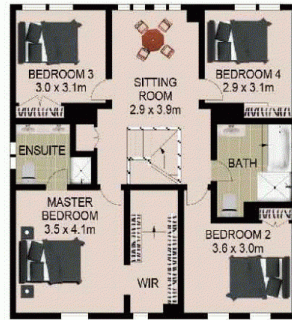
- Formal and casual living and dining areas, floorboards throughout
- Chefs kitchen with gas cooking, breakfast bar, ample bench space
- Upper level includes four bedrooms with built in robes, plush carpet
- Luxurious bathroom, plus ensuite in main bedroom, W/C downstairs
- Undercover alfresco entertaining area leading to



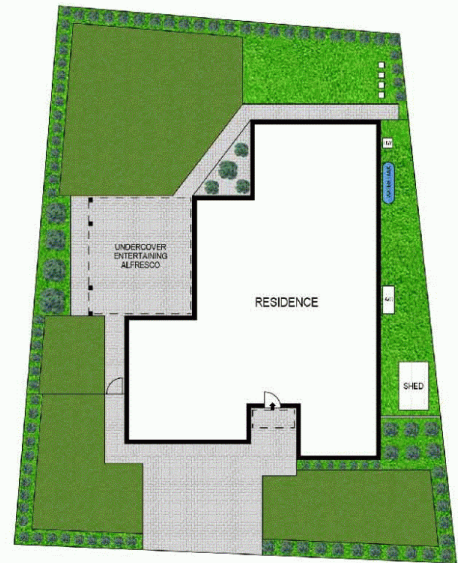
Nick Papas
02 9314 2100



GROUND LEVEL



FIRST LEVEL



SITE PLAN
(NOT TO SCALE)

0 1 2 3 4 5
SCALE (METRES)

PLANS SHOWN ONLY INDICATIVE OF LAYOUT. DIMENSIONS ARE APPROXIMATE.
Ref. No: 71235

1 GAINFORD AVENUE



MATRAVILLE