



1038-1040 Anzac Parade MAROUBRA NSW

4 2 4

A very rare opportunity to acquire a rare parcel of land with endless opportunities in the heart of Maroubra Junction CBD. Presenting these two double brick semis on a total of 846 sqm with R3 zoning, this is a superb opportunity for the developer or builder to buy today and prosper tomorrow. With the option to build a boarding house/student accommodation, townhouse, villas, residential apartment building or a child care centre (all STCA), this is an opportunity not to be missed.

Features:

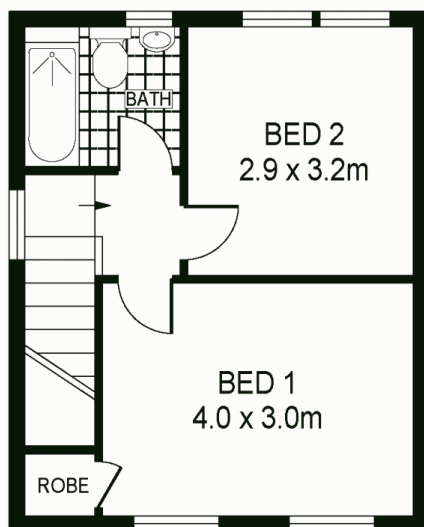
- Two double brick two bedroom semi detached homes
- Kitchens with gas cooking, bedrooms with built in robes
- 846 sqm parcel of land, 19.82m x 42.67m, R3 zoning
- Separate lounge/dining areas, sunny level rear backyards
- Large side drive ways with parking for up to four cars

Land Size : 846 sqm

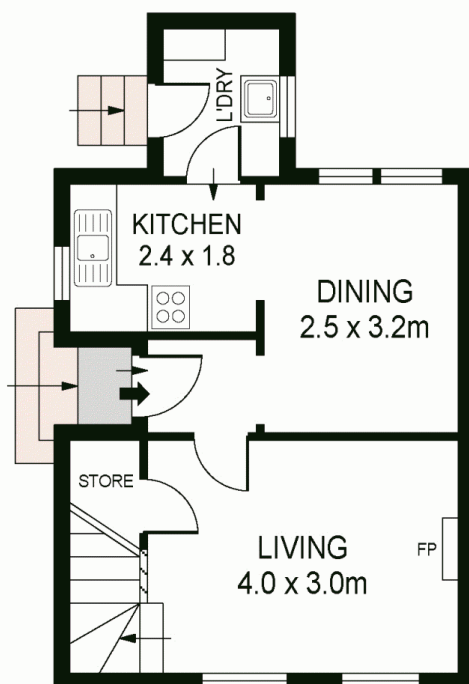
View : <https://www.agentsandco.com.au/sale/nsw/eastern-suburbs/maroubra/residential/house/6767543>



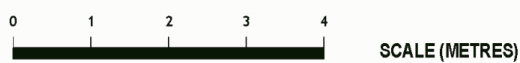
Nick Papas
02 9314 2100



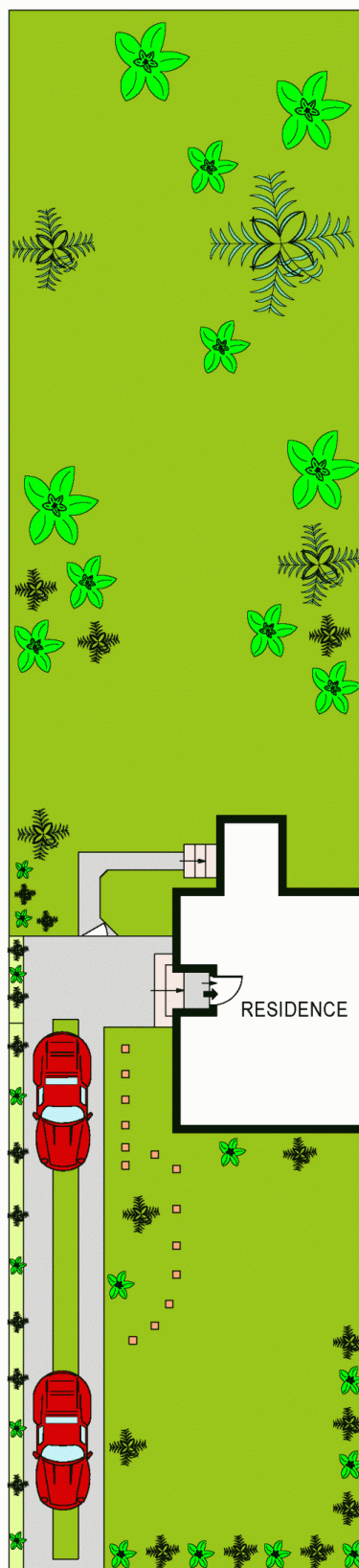
LEVEL ONE



GROUND LEVEL

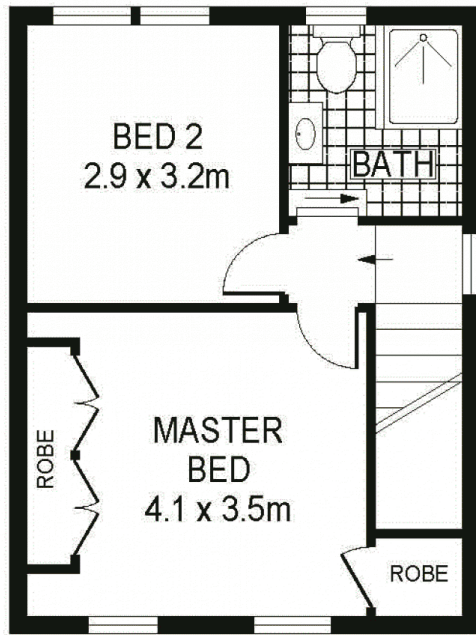


ALL INFORMATION CONTAINED HEREIN IS GATHERED FROM SOURCES WE DEEM TO BE RELIABLE.
HOWEVER WE CANNOT GUARANTEE IT'S ACCURACY AND INTERESTED PARTIES SHOULD RELY ON THEIR OWN ENQUIRIES.
REF. NO: 65182

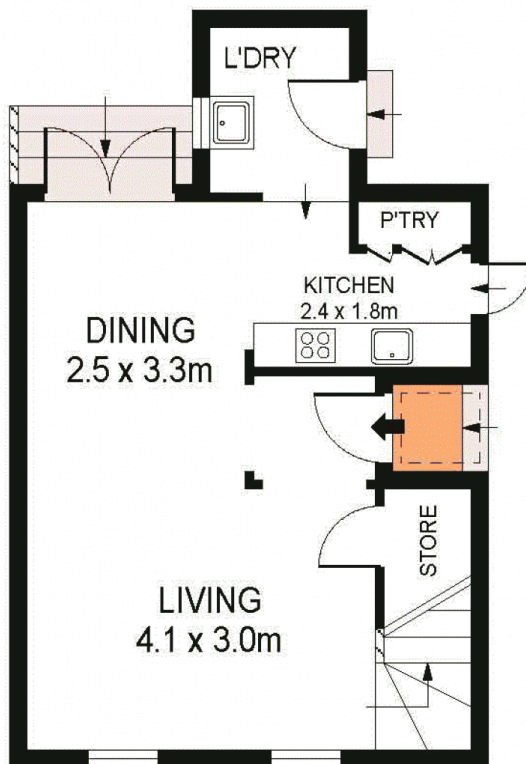


SITE PLAN
(NOT TO SCALE)

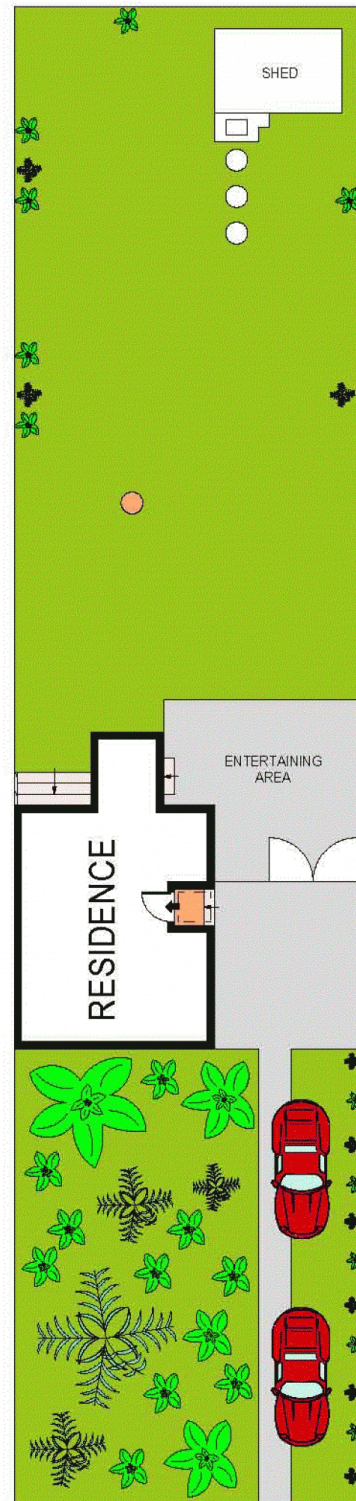




FIRST FLOOR



GROUND FLOOR



SITE PLAN
(NOT TO SCALE)



PLANS SHOWN ONLY INDICATIVE OF LAYOUT. DIMENSIONS ARE APPROXIMATE.
Ref. No: 64969

