



2/30 Portland Crescent MAROUBRA NSW

2 1 2

Located in a boutique block of only five, this modern two bedroom apartment presents a superb lifestyle purchase with Maroubra's beachside cafes, ocean parkland and local shops only a short distance away. With two bedrooms of accommodation, large living area, eat in kitchen and very low strata fees this is an ideal opportunity for the first home buyer looking to enter the Maroubra market or an investor adding to their portfolio.

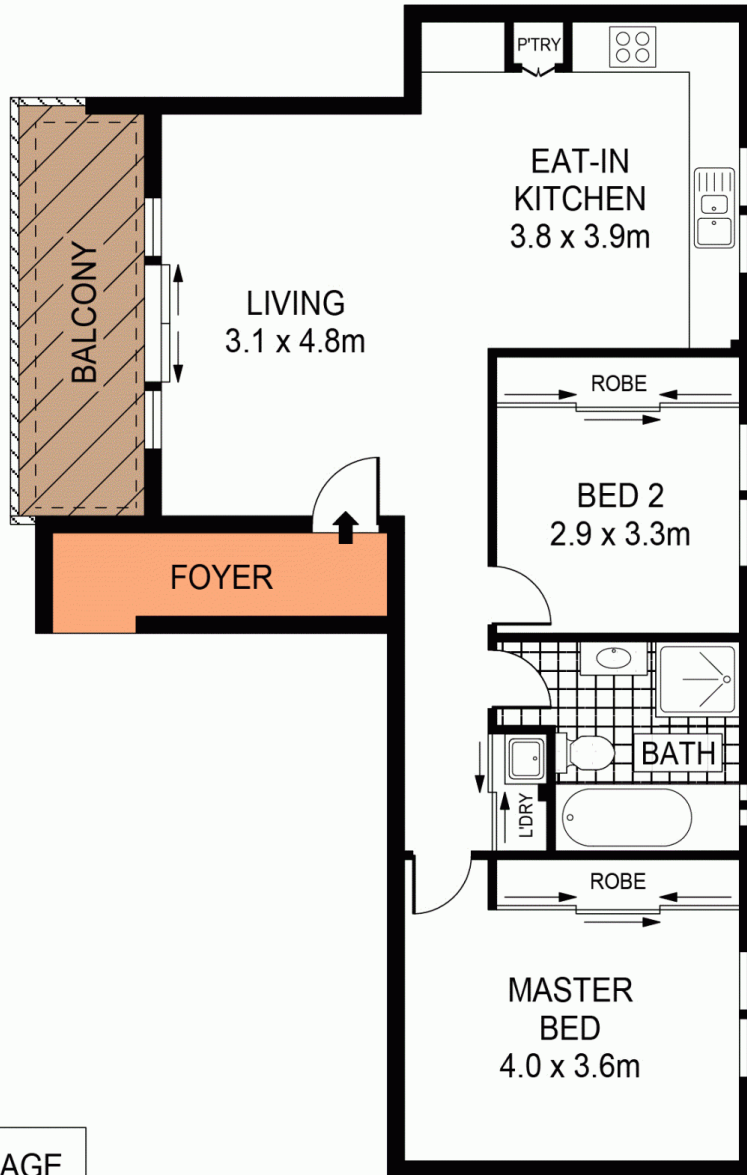
Features:

- Large living area flowing onto sunny balcony
- Eat in kitchen with electric cooking, ample storage
- Two good sized bedrooms, both with built in wardrobes
- South west facing courtyard, pet friendly subject to strata
- Lock up single garage, plus under cover secure car space
- Double brick, security intercom, shared lock up storage

View : <https://www.agentsandco.com.au/sale/nsw/easter-n-suburbs/maroubra/residential/apartment/6767541>

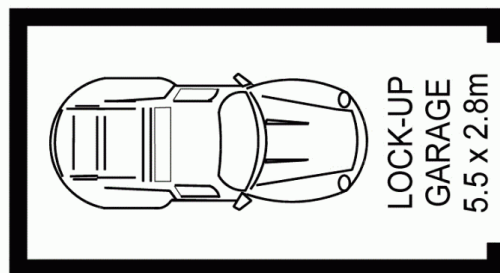
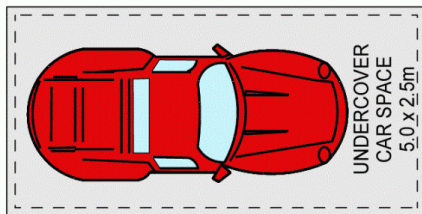


Nick Papas
02 9314 2100



STORAGE

GROUND LEVEL



BASEMENT



PLANS SHOWN ONLY INDICATIVE OF LAYOUT. DIMENSIONS ARE APPROXIMATE.
Ref. No: 64619

