



202/82 Bay Street BOTANY NSW

1 1 1

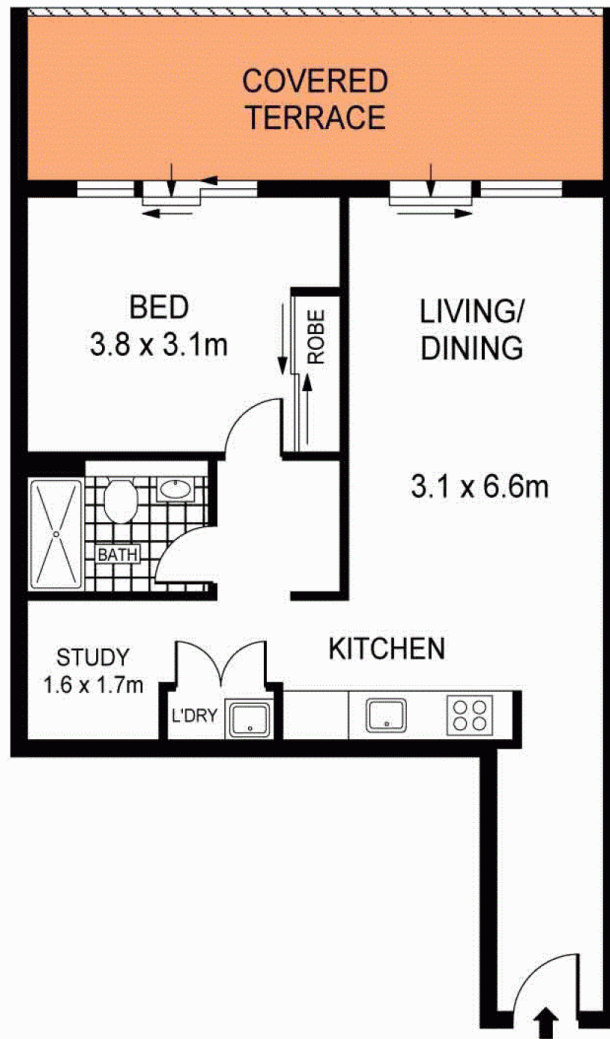
This designer luxury apartment is located in the sought after 'Bayside' complex just metres away from Booralee Park and Botany Aquatic Centre, with its private and quiet position at the rear of the development, the apartment is complimented by its northern aspect and will be flooded with light in this highly sought after position. Offering a large spacious bedroom with built-in robe, both the bedroom and lounge flow onto sun-drenched balcony which is ideal for lazy Sundays or entertaining with friends.

Features:

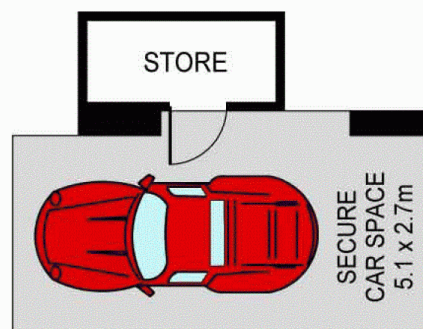
- Desirable northern aspect, free flowing living areas
- Stylish designer interior, Daikin ducted Airconditioning
- Gourmet kitchen opens to open plan lounge and dining

[For full version visit the website](https://www.agentsandco.com.au/sale/nsw/eastern-suburbs/botany/residential/apartment/6767505)

Type : Apartment
Building Size : 9 sqm
View : <https://www.agentsandco.com.au/sale/nsw/eastern-suburbs/botany/residential/apartment/6767505>



LEVEL TWO



LEVEL B2



ALL INFORMATION CONTAINED HEREIN IS GATHERED FROM SOURCES WE DEEM TO BE RELIABLE.
HOWEVER WE CANNOT GUARANTEE ITS ACCURACY AND INTERESTED PARTIES SHOULD RELY ON THEIR OWN ENQUIRIES.
REF. NO: 59905



202/82 BAY STREET

BOTANY