



## 148 Franklin Street MATRAVILLE NSW

4 2 2

Set on a sun-drenched north facing 506sqm corner block this fabulously located brick home set back from Franklin Street at the end of a quiet slip road presents stylishly updated and inviting interiors. It's single level layout provides flexible and spacious living, opening on to a huge timber deck ideal for entertaining at any time of the year. A studio/ rumpus at the rear with bathroom provides a 4th bedroom or possible granny flat conversion (STCA). A low-maintenance, child friendly yard completes the picture, making the home an ideal family sanctuary.

- \* Stylish and welcoming single level home with family friendly layout
- \* Sun-drenched timber deck is an ideal spot for relaxed

**Type** : House

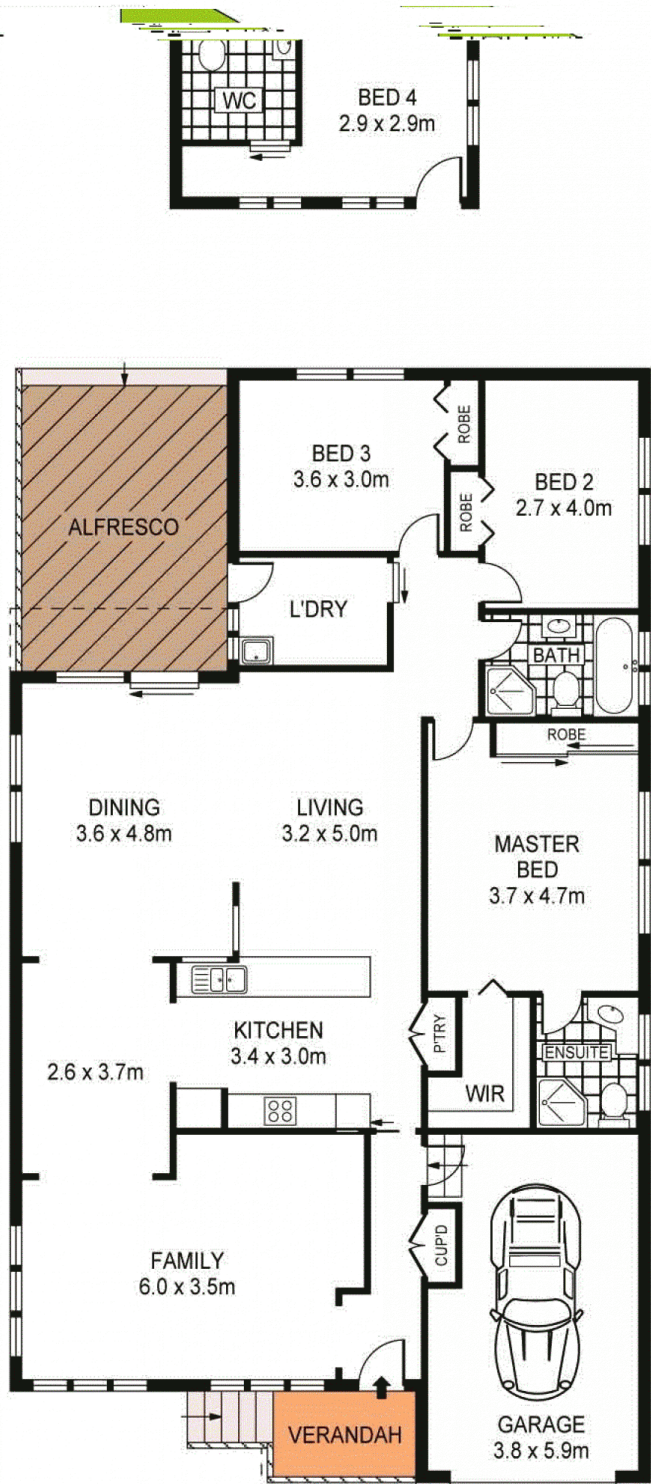
**View** : <https://www.agentsandco.com.au/sale/nsw/eastern-suburbs/matraville/residential/house/6767503>



**Nick Papas**  
02 9314 2100

[For full version visit the website](https://www.agentsandco.com.au)





**SITE PLAN**  
(NOT TO SCALE)



ALL INFORMATION CONTAINED HEREIN IS GATHERED FROM SOURCES WE DEEM TO BE RELIABLE.  
HOWEVER WE CANNOT GUARANTEE ITS ACCURACY AND INTERESTED PARTIES SHOULD RELY ON THEIR OWN ENQUIRIES.  
REF. NO: 60143



**148 FRANKLIN STREET**

**MATRAVILLE**