



2527/43 Wilson Street BOTANY NSW

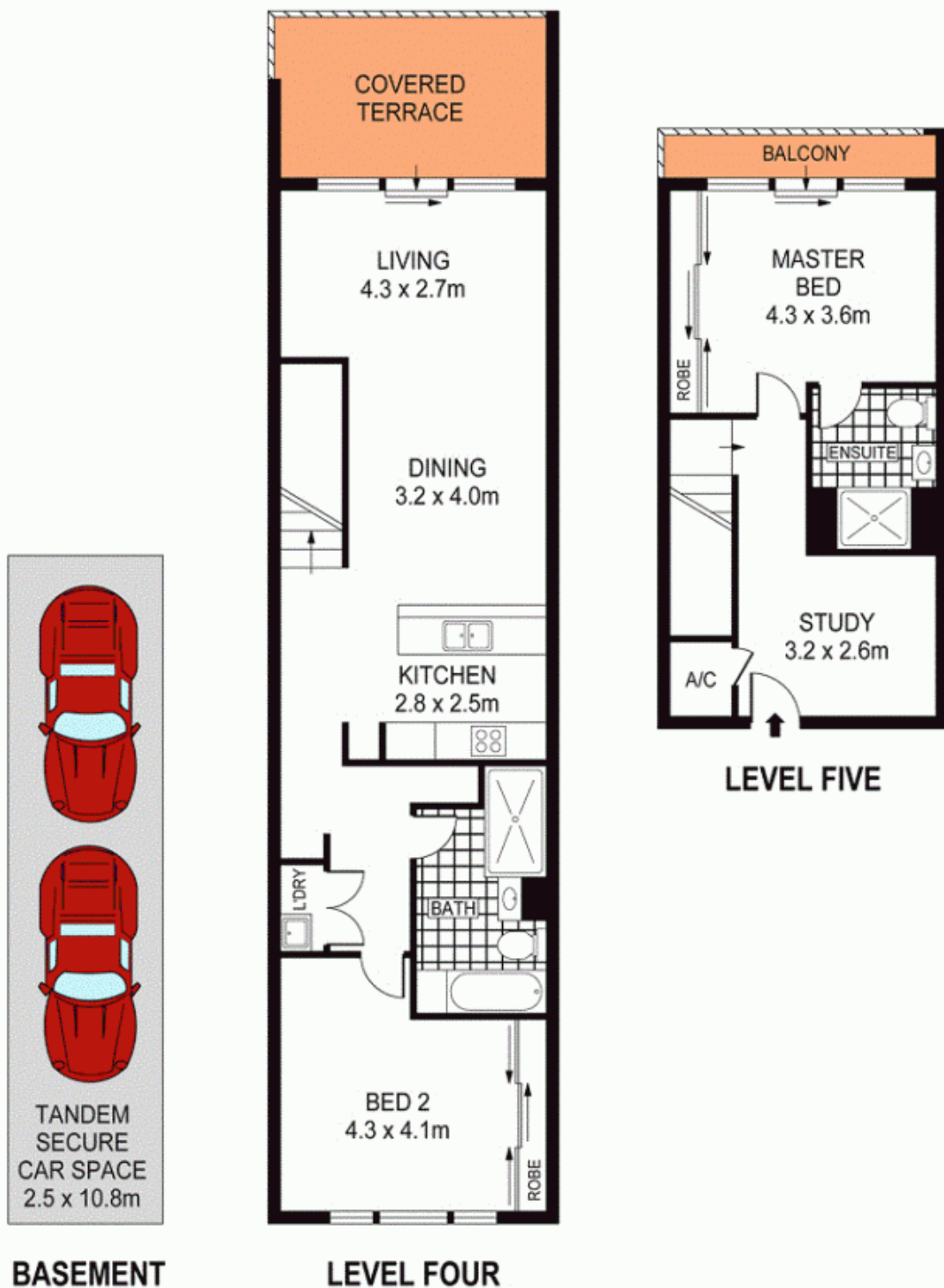
2 2 2

Beautifully presented over two levels, this 5th floor apartment in Botany's Park Grove complex is the perfect combination of contemporary style and low maintenance living. Its spacious interiors and seamless indoor/outdoor flow make it both a fabulous home or a brilliant addition to your investment portfolio.

Type : Apartment
Land Size : 153 sqm
View : <https://www.agentsandco.com.au/sale/nsw/eastern-suburbs/botany/residential/apartme nt/6767452>

- * Stylishly designed, beautifully light-filled, dual level apartment
- * Huge entertainer's terrace extends to open plan living space
- * Stone kitchen features quality gas stainless Smeg appliances
- * Both king sized bedrooms have built-in's, one has private

[For full version visit the website](https://www.agentsandco.com.au)



0 1 2 3 4 5
SCALE (METRES)

PLANS SHOWN ONLY INDICATIVE OF LAYOUT. DIMENSIONS ARE APPROXIMATE.
Ref. No: 52177



2527E/43 WILSON STREET

BOTANY