



**304/140 Maroubra Road MAROUBRA NSW**

2 2 1

Picture yourself living the ultimate modern urban lifestyle in this beautiful two bedroom apartment at the exclusive Botanica Building on level three of the 'Pacific Square' development. The apartment is a mere lift ride away from the Pacific Square Shopping Centre with an abundance of boutique restaurants, cafes, services and transport all at your doorstep. Convenient location in close proximity to UNSW, hospitals, schools, an array of glorious Eastern Suburbs beaches, the airport, CBD and more.

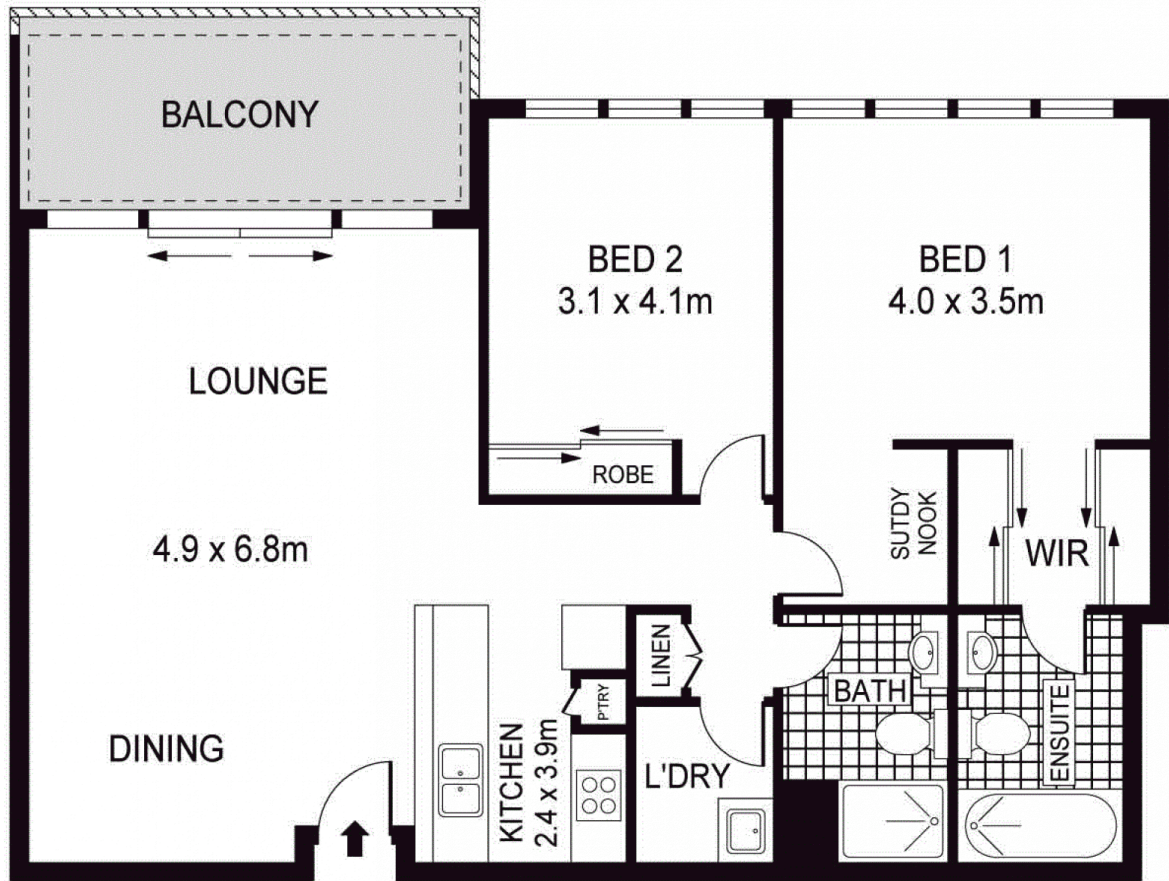
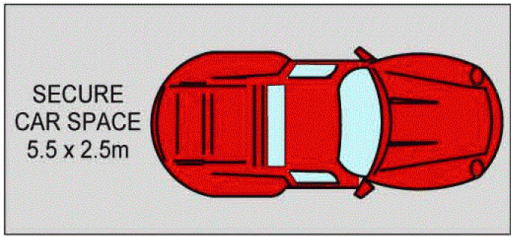
- \* Two generous bedrooms with built-ins, main with study nook, walk-in-robe, and a luxurious ensuite
- \* Spacious open plan living area which flows seamlessly onto a generous balcony with Botany Bay views

[For full version visit the website](https://www.agentsandco.com.au)

**Type** : Apartment  
**Land Size** : 117 sqm  
**View** : <https://www.agentsandco.com.au/sale/nsw/eastern-suburbs/maroubra/residential/apartment/6767434>



**Nick Papas**  
 02 9314 2100



## LEVEL THREE



PLANS SHOWN ONLY INDICATIVE OF LAYOUT. DIMENSIONS ARE APPROXIMATE.  
Ref. No: 49596



304/140 MAROUBRA ROAD

MAROUBRA