



4/17 Grace Campbell Crescent HILLSDALE NSW

2 **1** **1**

Completely renovated and ready to move in with not a cent to spend. This extra-large ground floor apartment is ideal for investors, first home buyers, a young family or empty nesters looking to downsize.

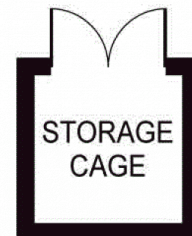
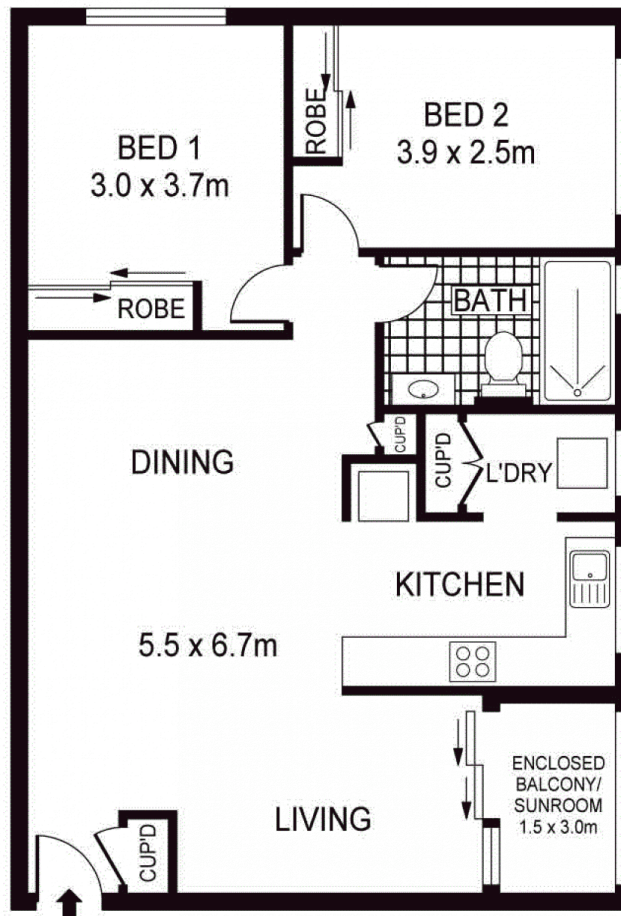
- * Two double bedrooms both with built-ins wardrobes
- * Spacious open plan tiled lounge and dining area
- * New kitchen with caesarstone bench-tops, gas appliances and dishwasher
- * New bathroom with quality finishes including floor to ceiling tiles
- * Enclosed balcony, internal laundry, car space plus storage cage
- * A stone throw away from Westfield Eastgardens,

[For full version visit the website](https://www.agentsandco.com.au/sale/nsw/eastern-suburbs/hillsdale/residential/apartment/6767423)

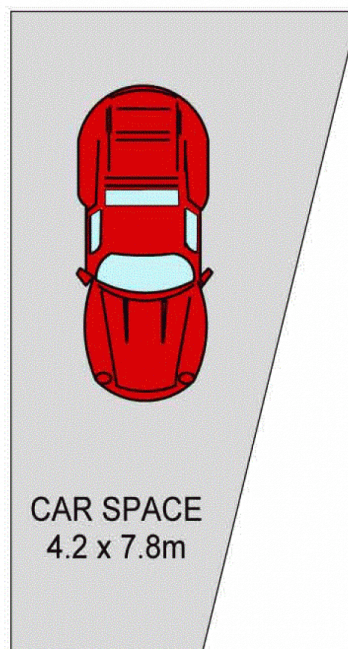
Type : Apartment
Land Size : 93.3 sqm
View : <https://www.agentsandco.com.au/sale/nsw/eastern-suburbs/hillsdale/residential/apartment/6767423>



Nick Papas
02 9314 2100



GROUND FLOOR



PLANS SHOWN ONLY INDICATIVE OF LAYOUT. DIMENSIONS ARE APPROXIMATE.
Ref. No: 48012



4/17 GRACE CAMPBELL CRES

HILLSDALE