



2/36 Folkestone Parade BOTANY NSW

2 2 2

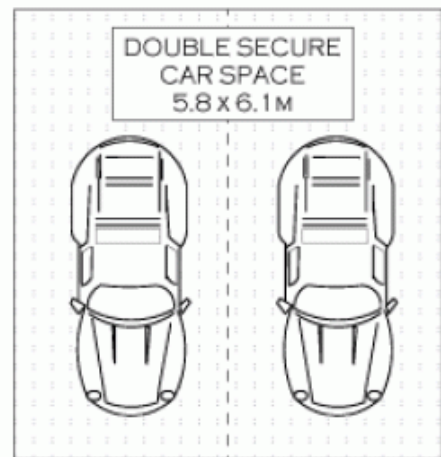
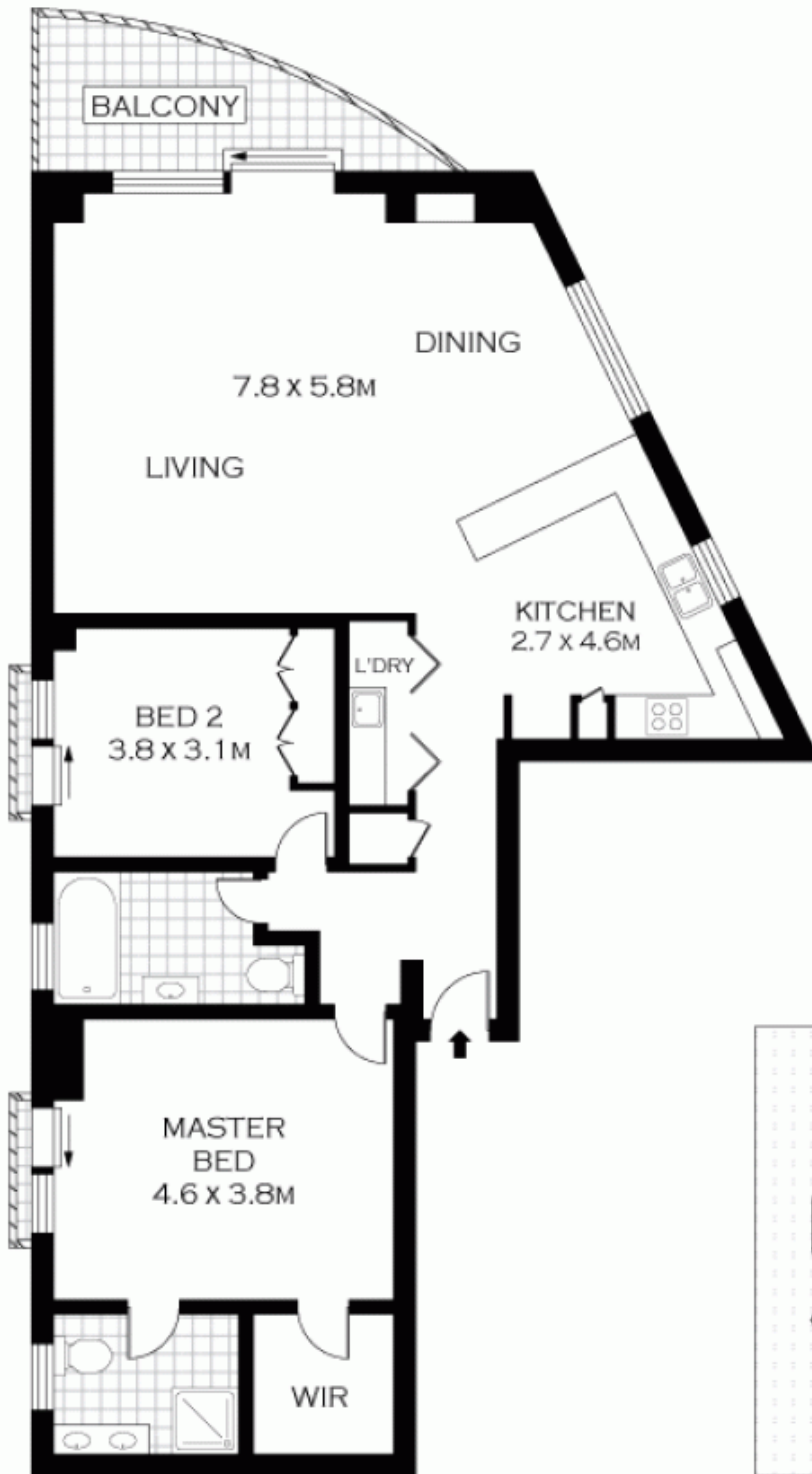
Skyways Apartments is vogue living all the way. The exterior reflects the classic Manhattan look with contemporary sleek living. Inside, the chic styling is continued with polished timber floors and quality fittings throughout. Situated on the edge of Botany Bay overlooking Sir Joseph Banks Park and conveniently located close to transport, schools and other amenities.

- * 2 spacious bedrooms with built-in robes
- * Main with en suite, walk-in robe and private balcony
- * Huge open plan living area, separate dining
- * Modern granite kitchen with BOSCH appliances
- * Internal laundry with dryer
- * Security double car space with plenty of storage
- * Security building with push button intercom

Type : Apartment

View : <https://www.agentsandco.com.au/sale/nsw/easter-n-suburbs/botany/residential/apartment/6767412>

[For full version visit the website](https://www.agentsandco.com.au)



FIRST FLOOR



PLANS SHOWN ONLY INDICATIVE OF LAYOUT. DIMENSIONS ARE APPROXIMATE.
Floor plans by www.realestatemarketingaustralia.com.au
Ref. No. 7548

INT : 109M²



2/36 FOLKESTONE PARADE

BOTANY