

## 65 Jersey Road MATRAVILLE NSW

4 3 2

This impressive north facing family home is situated in a "dream" location opposite Heffron Park and blends in well with the casual atmosphere it's created by its own tropical palms and ferns swaying around the poolside entertaining area. This home is perfect for the large and growing family.

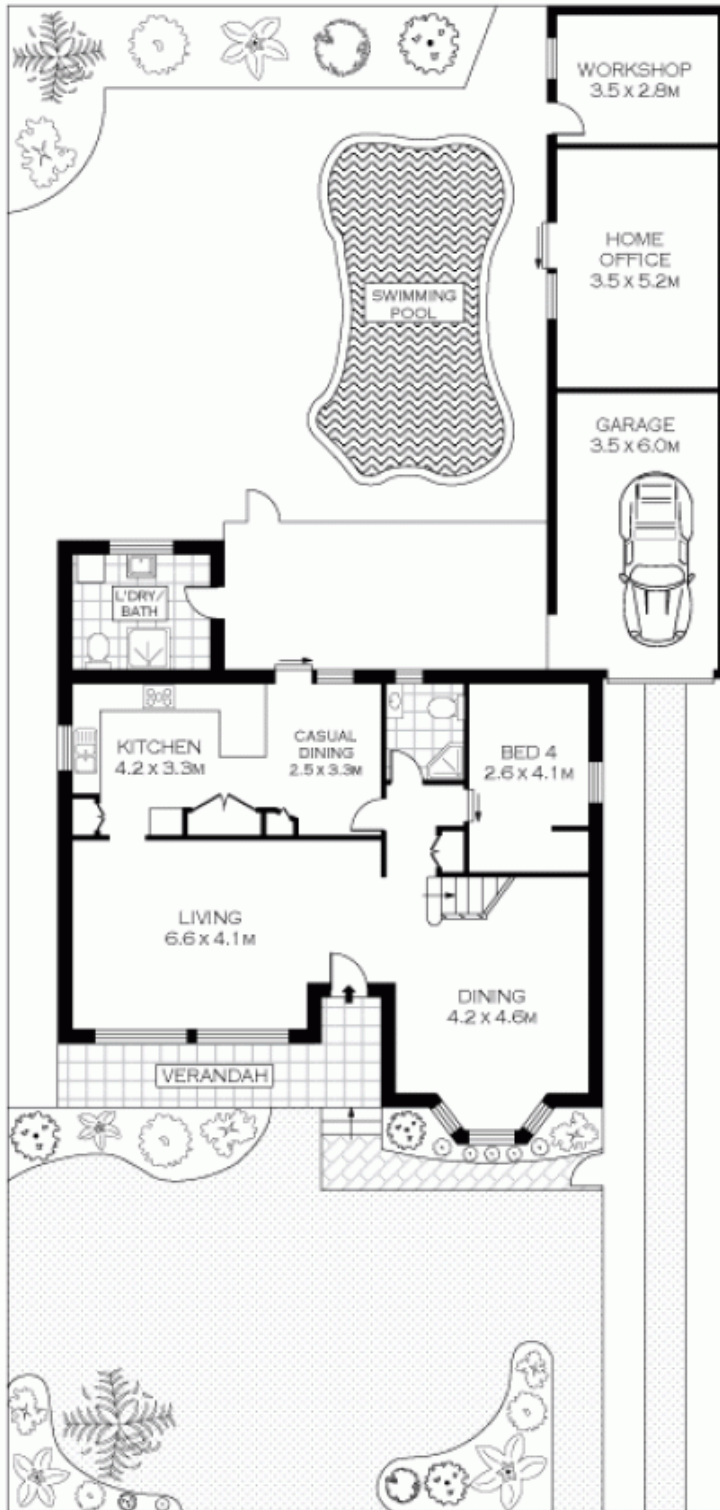
**View** : <https://www.agentsandco.com.au/sale/nsw/easter-n-suburbs/matraville/residential/house/6767400>

### Downstairs:

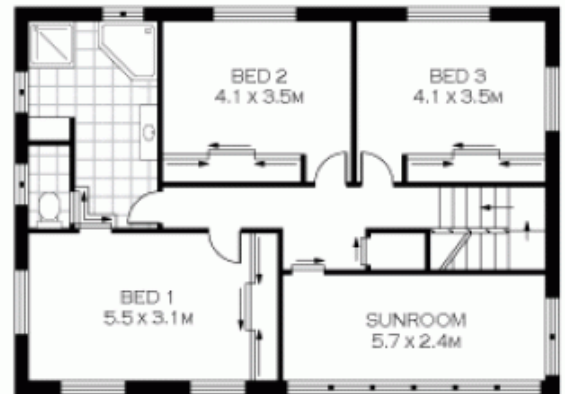
- \* Spacious living area with timber floors
- \* Formal dining
- \* Huge family eat-in kitchen
- \* 4th bedroom or study
- \* Tiled bathroom

### Upstairs:

- \* 3 double bedrooms with built-in robes
- \* 2 way modern tiled bathroom with spa



GROUND FLOOR



FIRST FLOOR



SCALE (METRES)

PLANS SHOWN ONLY INDICATIVE OF LAYOUT. DIMENSIONS ARE APPROXIMATE.  
 Floor plans by [www.realestatemarketingaustralia.com.au](http://www.realestatemarketingaustralia.com.au)  
 Ref No: 6946

INT : 185M<sup>2</sup>



65 JERSEY ROAD

MATRAVILLE