



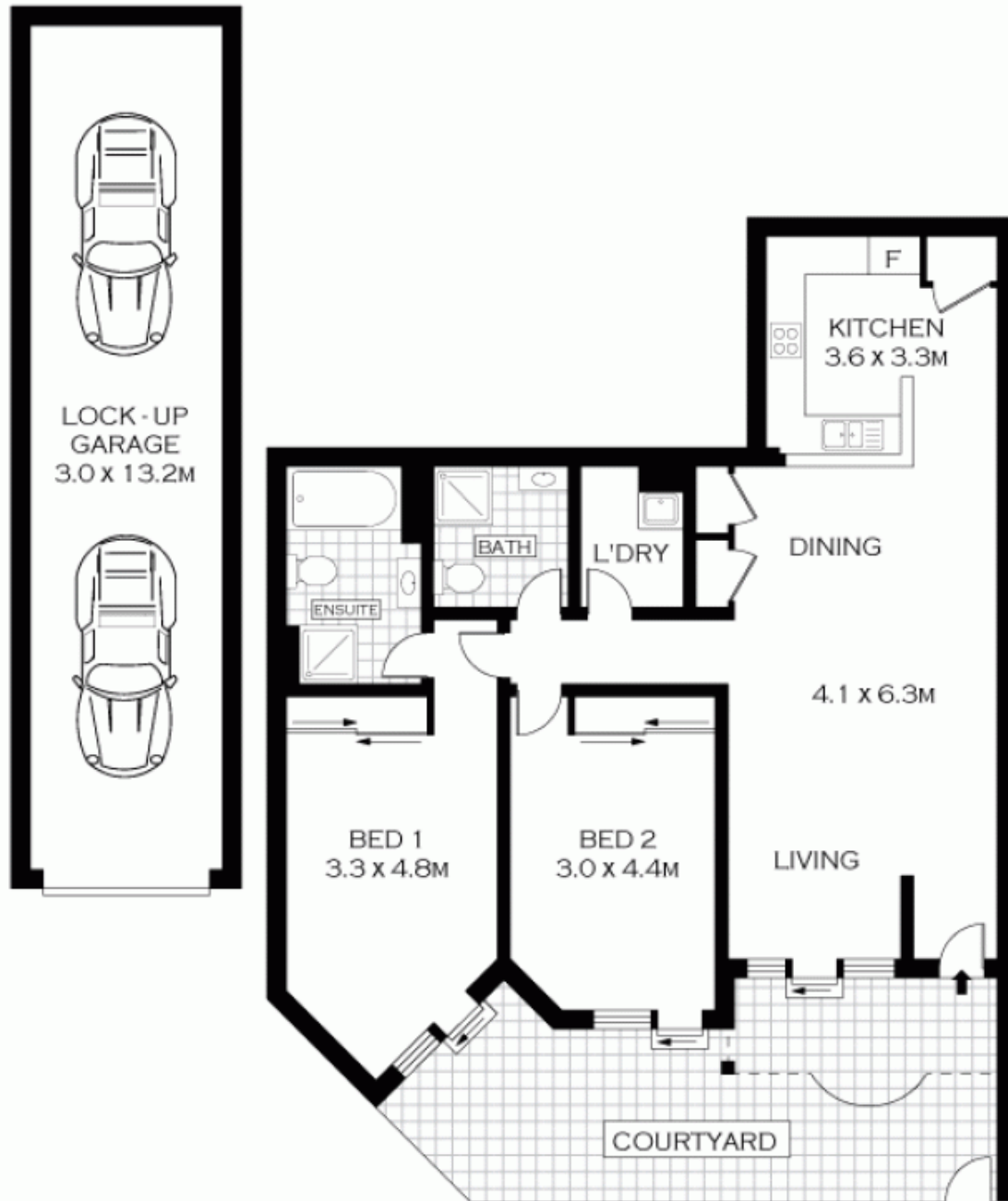
446/83-93 Dalmeny Avenue ROSEBERY NSW

2 2 2

Ideally positioned in the popular "Kimberley Estate" is this delightful two bedroom family sized apartment. Offering two security car spaces on title, internal laundry and second bathroom, this apartment truly ticks every box. A centrally located residence located on the city fringe, which would be a perfect first home or astute investment acquisition. The apartment also offers access to resort style facilities including pool, gyms, spas, saunas, squash court, cafes and 24 hour security.

**View** : <https://www.agentsandco.com.au/sale/nsw/easter-n-suburbs/rosebery/residential/apartment/676737>

- \* Two large bedrooms with built-in wardrobes and air conditioning
- \* Main bedroom with adjoining en suite
- \* Sparkling tiled bathroom
- \* Large combined lounge and dining
- \* Modern kitchen with breakfast bar



GROUND FLOOR



PLANS SHOWN ONLY INDICATIVE OF LAYOUT. DIMENSIONS ARE APPROXIMATE.  
 FLOOR PLANS BY WWW.REALESTATEMARKETINFOAUSTRALIA.COM.AU  
 REF. NO. 5566

INT : 110M<sup>2</sup>



446/83-93 DALMENY AVENUE

ROSEBERY