



## 34/13 Grace Campbell HILLSDALE NSW

3 1 1

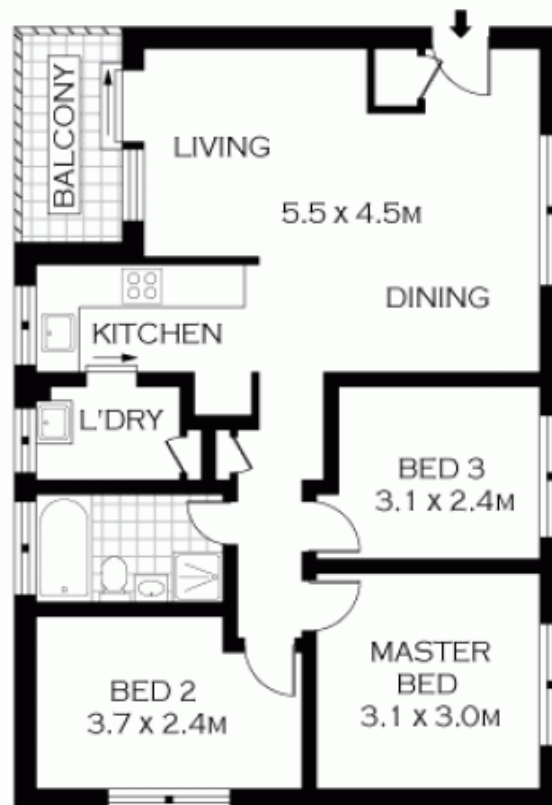
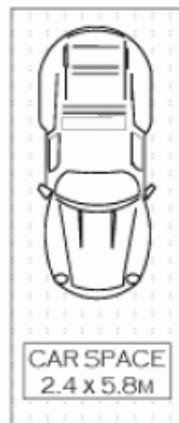
Relax and enjoy this perfectly positioned middle floor apartment, which has no common walls in a meticulously maintained building. Spacious three bedroom unit which enjoys an abundance of space, fresh air and natural light. Recently painted throughout and with brand new carpet, there is not a cent to spend. Located a short walk from Southpoint and Eastgardens shopping centres and surrounded by local parks, schools and transport. This is a fantastic opportunity for both owner and occupier.

- \* 3 good size bedrooms
- \* Spacious living and dining area
- \* Modern kitchen with plenty of cupboard space
- \* Sparkling tiled bathroom

**Type** : Apartment

**View** : <https://www.agentsandco.com.au/sale/nsw/eastern-suburbs/hillsdale/residential/apartment/6767333>

[For full version visit the website](https://www.agentsandco.com.au)



FIRST FLOOR

NOTE: UNDER COVER CAR SPACE



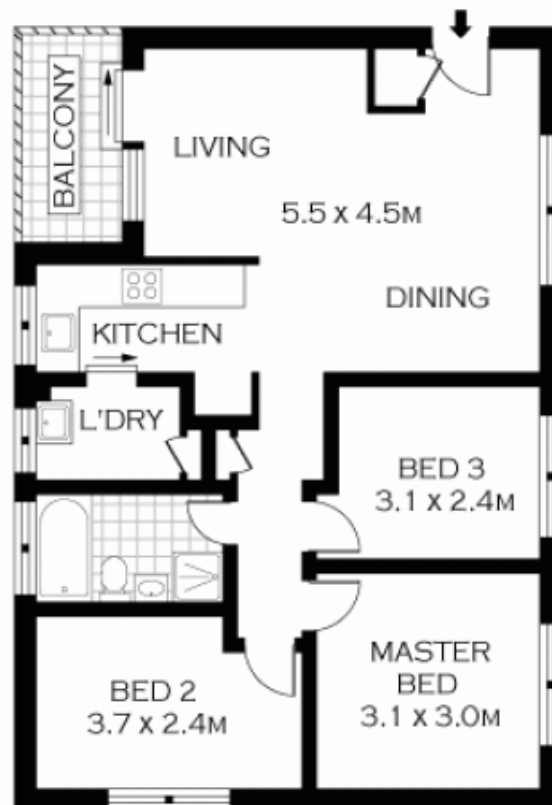
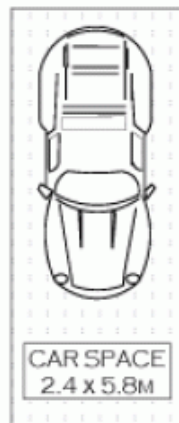
PLANS SHOWN ONLY INDICATIVE OF LAYOUT. DIMENSIONS ARE APPROXIMATE.  
Floor plans by [www.realestatemarketingsaustralia.com.au](http://www.realestatemarketingsaustralia.com.au)  
Ref. No: 4029

INT : 68m<sup>2</sup>



34/13 GRACE CAMPBELL CRESCENT

HILLSDALE



FIRST FLOOR

NOTE: UNDER COVER CAR SPACE



PLANS SHOWN ONLY INDICATIVE OF LAYOUT. DIMENSIONS ARE APPROXIMATE.  
Floor plans by [www.realestatemarketingsaustralia.com.au](http://www.realestatemarketingsaustralia.com.au)  
Ref. No: 4029

INT : 68m<sup>2</sup>



34/13 GRACE CAMPBELL CRESCENT

HILLSDALE