



5/12-28 Daphne Street BOTANY NSW

3 2 2

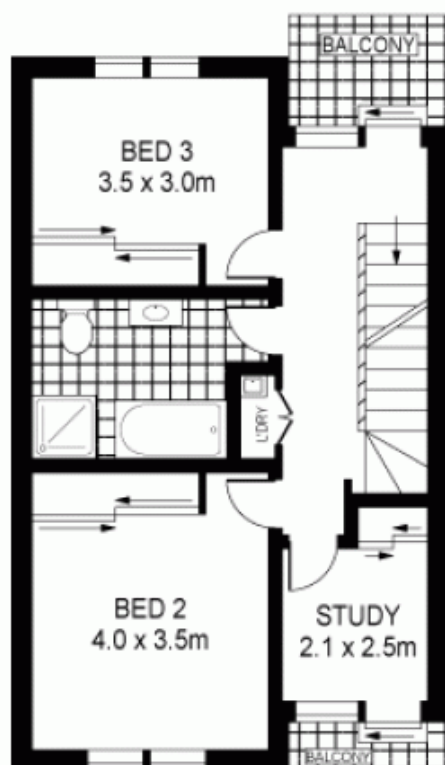
Set in Botany's as new boutique complex, no expense has been spared in creating a home where comfort and style are paramount. Generously proportioned light filled interiors simply blend into the sun drenched, northerly aspect, private rear courtyard. Built over three levels with plenty of space for the growing family. Move straight in and enjoy the luxury!

- \* 3 large bedrooms with built-in robes
- \* Main with en suite and walk-in robe
- \* Large study
- \* Open plan living and dining area
- \* Large modern kitchen
- \* Well finished tiled bathroom

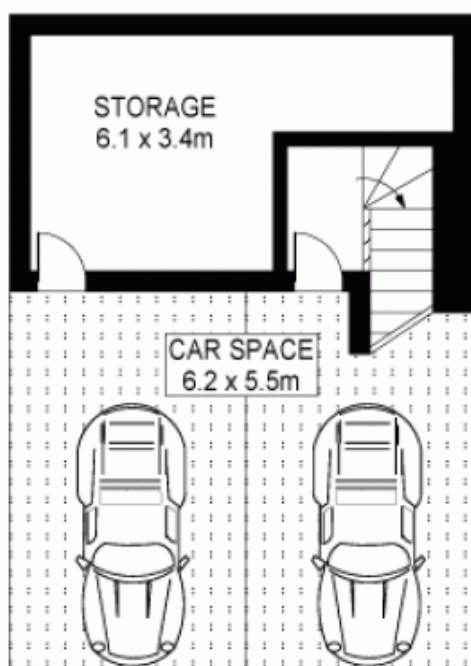
**Type** : Townhouse

**View** : <https://www.agentsandco.com.au/sale/nsw/eastern-suburbs/botany/residential/townhouse/6767296>

[For full version visit the website](https://www.agentsandco.com.au)



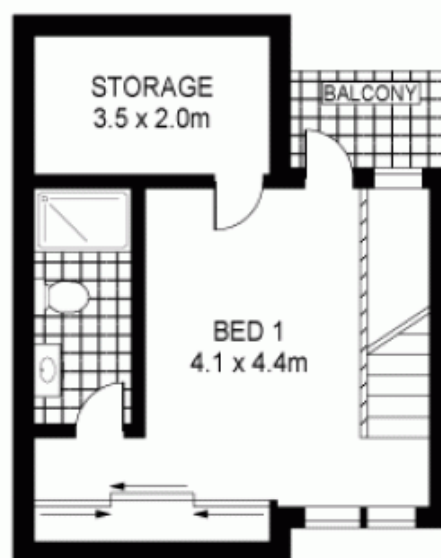
**FIRST FLOOR**



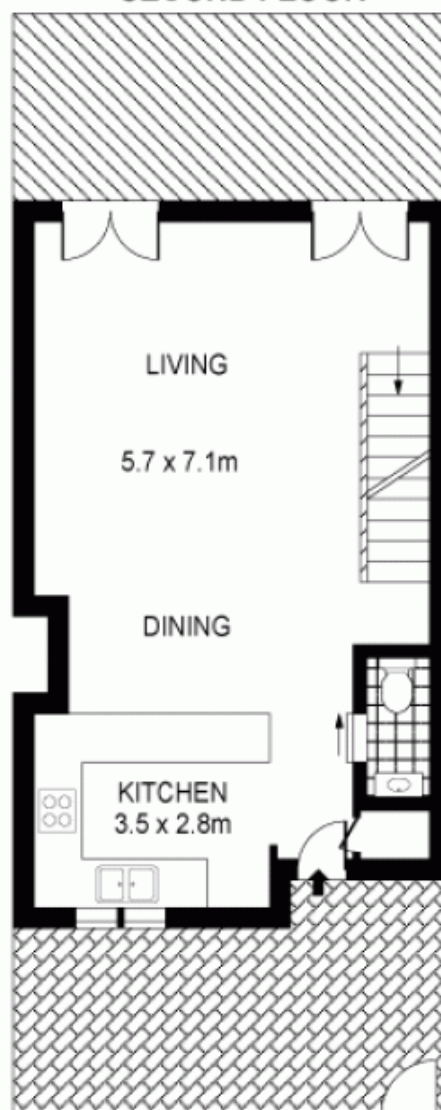
**LOWER LEVEL**



PLANS SHOWN ONLY INDICATIVE OF LAYOUT. DIMENSIONS ARE APPROXIMATE.  
Floor plans by [www.realestatemarketingaustralia.com.au](http://www.realestatemarketingaustralia.com.au)



**SECOND FLOOR**



**GROUND FLOOR**

