



52 Mawson Parade CHIFLEY NSW

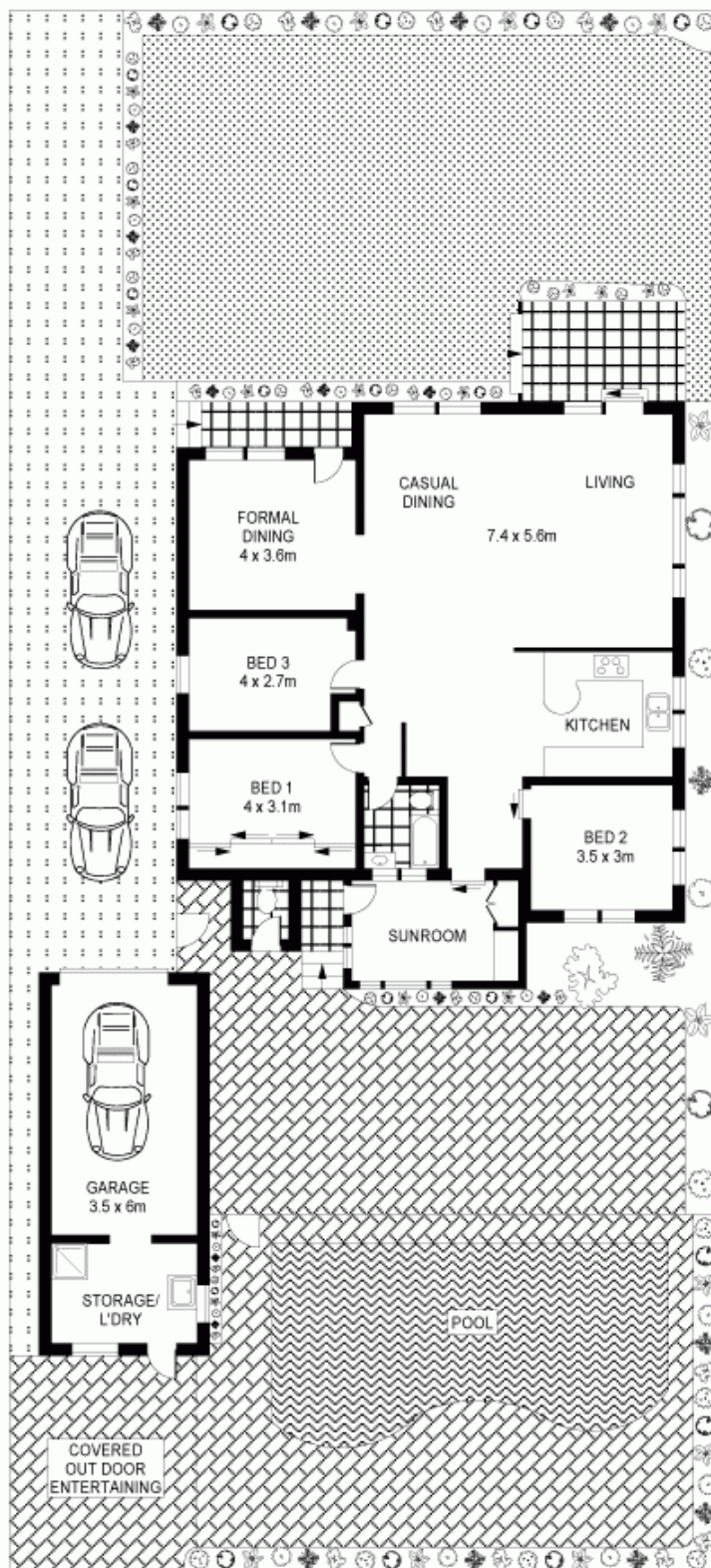
3 2 3

Located in a tranquil tree lined street is this well presented freestanding brick home set on a rectangular 625sqm block of land. The home offers great scope to further expand, renovate or enhance, but livable as is.

Type : House

View : <https://www.agentsandco.com.au/sale/nsw/eastern-suburbs/chifley/residential/house/6767253>

Three bedrooms (one with built ins)
Huge open plan living area with a private patio
Formal dining area with bar
Full tiled bathroom with bathtub
External W.C and shower facilities
Inground swimming pool
Lock up garage with adjoining storage
Inspections by appointment are also available



GROUND FLOOR

1 2 3 4 5 SCALE (METRES)

PLANS SHOWN ONLY INDICATIVE OF LAYOUT. DIMENSIONS ARE APPROXIMATE.
Floor plans by capitalpropertymedia.com

INT : 125m²



52 MAWSON PARADE

CHIFLEY