



7 Irvine Street KINGSFORD NSW

5 3 4

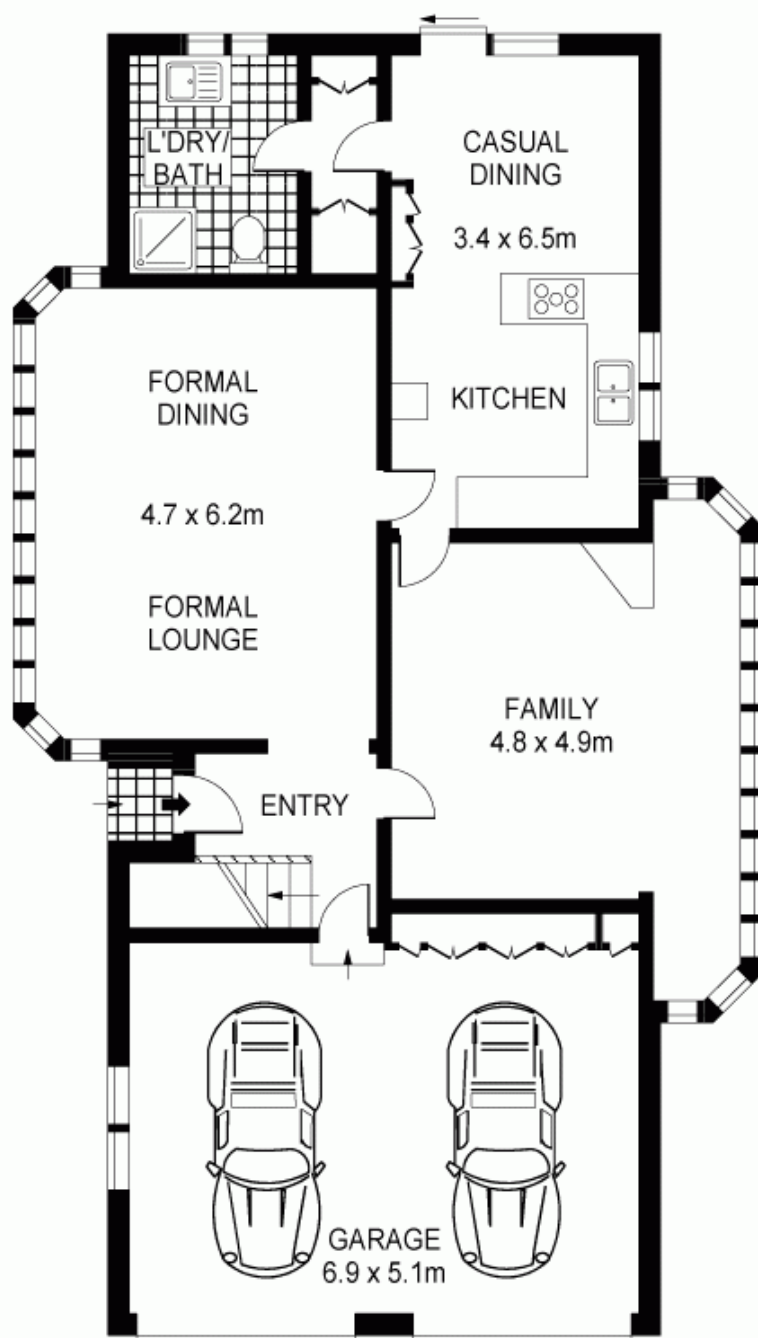
Set in this family friendly locale is this fantastically proportioned home offering an abundance of space, natural light and multiple entertaining areas both internally and externally. The home is ideal for entertaining with immaculate presentation throughout. Local schools, public transport to the CBD and UNSW are all within walking distance.

- * Five bedrooms (main with ensuite)
- * Built-in wardrobes in every bedroom
- * Modern granite kitchen with casual dining
- * Three tiled bathrooms (main with bathtub)
- * Large formal lounge and dining
- * Sun-drenched family room

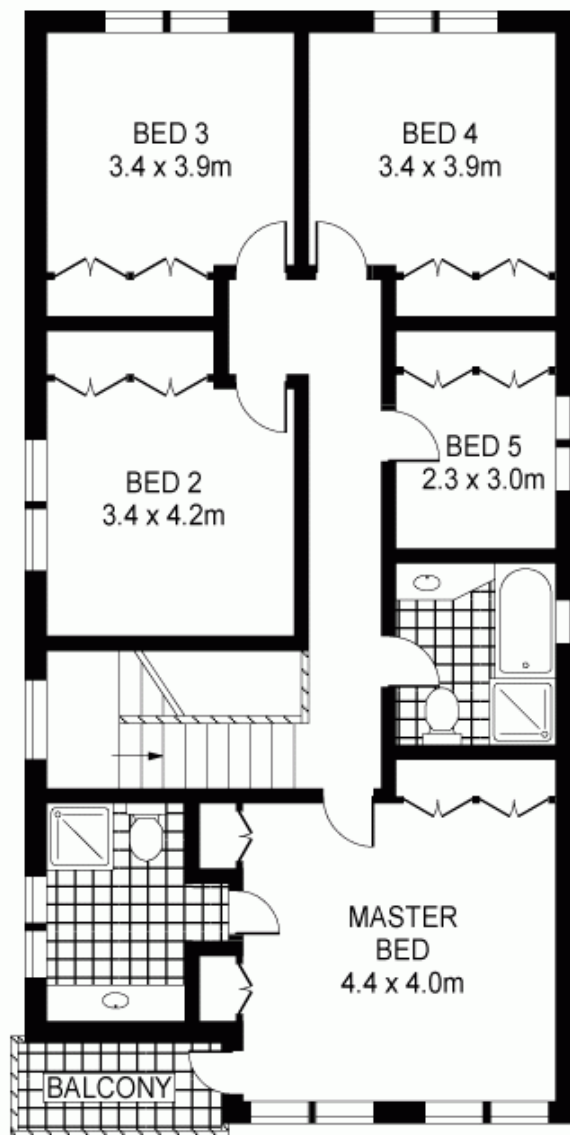
Type : House

View : <https://www.agentsandco.com.au/sale/nsw/eastern-suburbs/kingsford/residential/house/6767238>

[For full version visit the website](https://www.agentsandco.com.au)



GROUND FLOOR



FIRST FLOOR



PLANS SHOWN ONLY INDICATIVE OF LAYOUT. DIMENSIONS ARE APPROXIMATE.
Floor plans by capitalpropertymedia.com

INT : 236.77m²



7 IRVINE STREET

KINGSFORD