



MALABAR

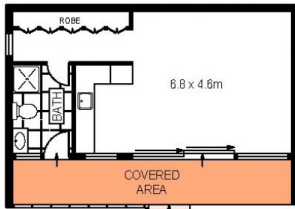
6  3  5 

Remarkably generous and luxurious interiors designed by acclaimed interior designer Greg Natale for entertaining. This newly developed and spacious executive home offers an abundance of natural light and features 6 spacious bedrooms plus separate study, 2 spacious bathrooms plus ensuite, 5 car lock up garage, swimming pool and a fully equipped studio/pool cabana at the rear of the property.

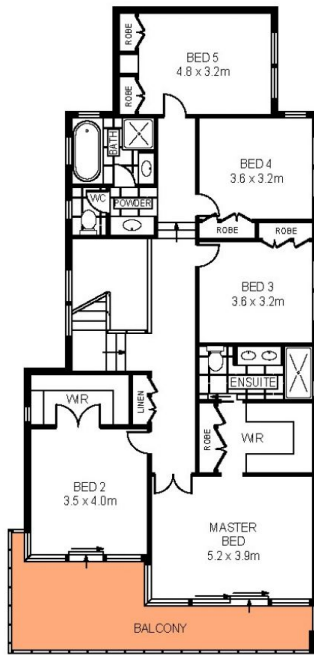
View : <https://www.agentsandco.com.au/lease/nsw/eastern-suburbs/malabar/residential/house/6745256>

Other notable details:

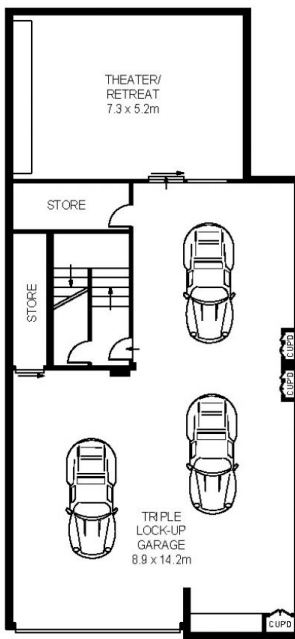
- * Air conditioning
- * Large open gourmet kitchen featuring designer details, ample storage and an oversized island/breakfast bar.
- * Extra formal living space with ocean views
- * Stunning timber floorboards throughout
- * The master suite is especially inviting with a luxurious ensuite, over sized walk-in wardrobe and balcony with



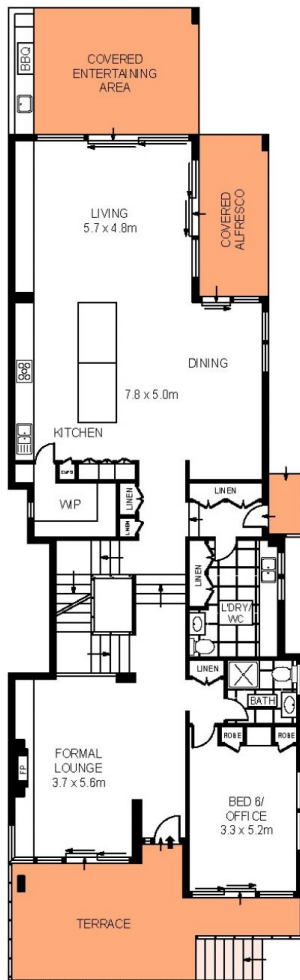
GROUND LEVEL



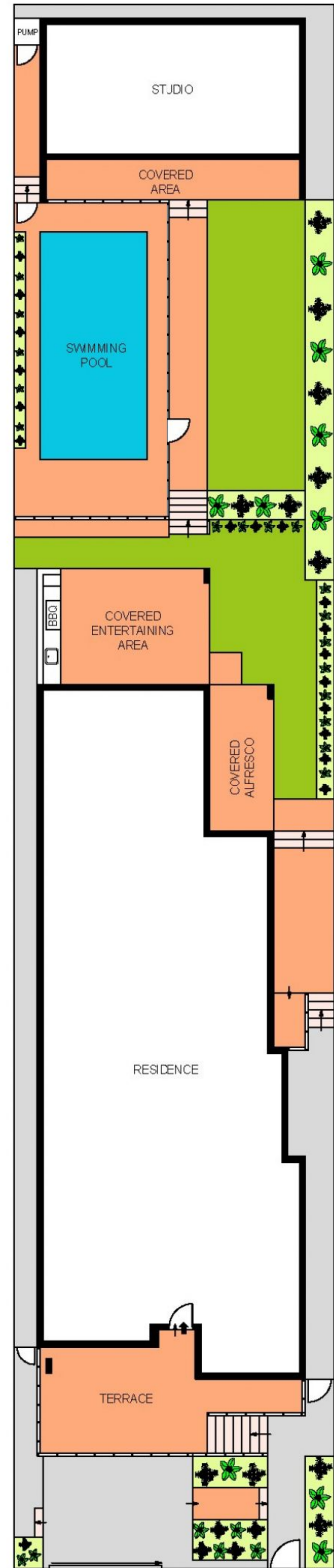
LEVEL ONE



BASEMENT



GROUND LEVEL



SITE PLAN
(NOT TO SCALE)



SCALE (METRES)

ALL INFORMATION CONTAINED HEREIN IS GATHERED FROM SOURCES WE DEEM TO BE RELIABLE. HOWEVER WE CANNOT GUARANTEE ITS ACCURACY AND INTERESTED PARTIES SHOULD RELY ON THEIR OWN ENQUIRIES. REF. NO. 67247

